

HSR[®]

■ HIGH PRESSURE
■ SERVICE
■ REPAIR

CATALOGO IDROTEKNICA



INDICE

RACCORDI IN OTTONE UNI12165	pag. 2
FLANGE IN OTTONE	pag. 8
RACCORDI IN OTTONE CROMATO	pag. 9
RACCORDI IN ACCIAIO INOX AISI316 / AISI 304	pag. 10
VALVOLE – RUBINETTI IN ACCIAIO INOX AISI316 / AISI 304	pag. 13
RACCORDI IN GHISA MALLEABILE UNI10242:1994	pag. 17
RACCORDI IN GHISA MALLEABILE "CUORE BIANCO" UNI10242:1994	pag. 22
RACCORDI IN ACCIAIO ZINCATO	pag. 24
RACCORDI IN OTTONE A STRINGERE	pag. 28
RACCORDI IN RAME	pag. 29
RACCORDI IN BRONZO	pag. 31
RACCORDI IN MATERIALE ATOSSICO PER ENOLOGIA	pag. 32
RACCORDI E TUBI IN POLIETILENE	pag. 33
GIUNTI ELASTICI E COLLARI DI RIPARAZIONE	pag. 34
VALVOLE A FARFALLA WAFER e LUG, SARACINESCHE	pag. 35
LINEA "FIRE" – ANTINCENDIO	pag. 36
ELETTROPOMPE PVC – INOX	pag. 37
LINEA "NAUTICA"	pag. 39
VALVOLE A SFERA	pag. 42
FLESSIBILI RACCORDATI IN INOX	pag. 47
CHIMICO PER IDROTEKNICA	pag. 48

RACCORDI IN OTTONE UNI12165:



Fig. 90

ART. 2

Gomito a 90° F.F.
F.F. yellow brass elbow joint.

codice code	∅	conf./pack	
		⊗	⊠
1185057	3/8"	10	120
1185058	1/2"	10	140
1185059	3/4"	10	100
1185060	1"	10	50
1185061	1 1/4"	1	30
1185062	1 1/2"	1	26
1185063	2"	1	14
1185064	2 1/2"	1	5
1185065	3"	1	3
1185067	4"	1	1



Fig. 90 PESANTE

ART. 4

Gomito F.F. pesante tipo navale.
Heavy F.F. yellow brass elbow joint.

codice code	∅	conf./pack	
		⊗	⊠
1185092	1/2"	10	140
1185093	3/4"	10	100
1185094	1"	10	50



Fig. 90 R

ART. 6

Gomito F.F. ridotto.
F.F. yellow brass reduced elbow joint.

codice code	∅	conf./pack	
		⊗	⊠
1185070	1/2"x3/4"	10	80
1185071	1/2"x1"	10	45
1185072	3/4"x1"	10	45



Fig. 92

ART. 8

Gomito a 90° M.F.
M.F. yellow brass elbow joint.

codice code	∅	conf./pack	
		⊗	⊠
1185257	3/8"	10	150
1185258	1/2"	10	170
1185259	3/4"	10	100
1185260	1"	10	50
1185261	1 1/4"	10	35
1185262	1 1/2"	1	27
1185263	2"	1	13
1185264	2 1/2"	1	4
1185265	3"	1	1
1185267	4"	1	1



Fig. 92 PESANTE

ART. 10

Gomito 90° M.F. pesante tipo navale.
Heavy M.F. yellow brass elbow joint.

codice code	∅	conf./pack	
		⊗	⊠
1185292	1/2"	10	160
1185293	3/4"	10	80
1185294	1"	10	50



Fig. 96

ART. 12

Bocchettone a gomito F.F. sede conica.
Yellow brass F.F. conic seat bent pipe union.

codice code	∅	conf./pack	
		⊗	⊠
1186158	1/2"	10	50
1186159	3/4"	10	30
1186160	1"	10	20
1186161	1 1/4"	1	10
1186162	1 1/2"	1	10
1186163	2"	1	8



Fig. 98

ART. 14

Bocchettone a gomito M.F. sede conica.
Yellow brass M.F. conic seat bent pipe union.

codice code	∅	conf./pack	
		⊗	⊠
1186108	1/2"	10	50
1186109	3/4"	10	30
1186110	1"	10	20
1186111	1 1/4"	1	8
1186112	1 1/2"	1	8
1186113	2"	1	6



Fig. 120

ART. 16

Gomito a 45° F.F.
F.F. yellow brass elbow 45°.

codice code	∅	conf./pack	
		⊗	⊠
1188008	1/2"	10	50
1188009	3/4"	10	50
1188010	1"	10	30
1188011	1 1/4"	1	20
1188012	1 1/2"	1	15
1188013	2"	1	6



Fig. 121

ART. 18

Gomito a 45° M.F.
M.F. yellow brass elbow 45°.

codice code	∅	conf./pack	
		⊗	⊠
1188108	1/2"	10	50
1188109	3/4"	10	50
1188110	1"	10	30
1188111	1 1/4"	1	20
1188112	1 1/2"	1	15
1188113	2"	1	6



Fig. 130

ART. 20

Raccordo a TEE.
TEE yellow brass joint.

codice code	∅	conf./pack	
		⊗	⊠
1185457	3/8"	10	100
1185458	1/2"	10	120
1185459	3/4"	10	70
1185460	1"	10	40
1185461	1 1/4"	1	26
1185462	1 1/2"	1	18
1185463	2"	1	10
1185464	2 1/2"	1	1
1185465	3"	1	1
1185467	4"	1	1



Fig. 130 PESANTE

ART. 22

TEE pesante tipo navale.
Heavy TEE yellow brass joint.

codice code	∅	conf./pack	
		⊗	⊠
1185492	1/2"	10	100
1185493	3/4"	10	50
1185494	1"	10	35



Fig. 130 R

ART. 24

TEE ridotto.
Reduced TEE yellow brass.

codice code	∅	conf./pack	
		⊗	⊠
1185470	3/4"x1/2"x3/4"	10	80
1185469	3/4"x1/2"x1/2"	10	60
1185471	1"x1/2"x1"	10	50
1185485	1"x1"x1/2"	10	20
1185472	1"x3/4"x1"	10	40

ART. 26

Croce.
Yellow brass cross.



Fig. 180

codice code	∅	conf./pack	
		⊗	⊠
1186758	1/2"	10	80
1186759	3/4"	10	40
1186760	1"	10	30
1186761	1 1/4"	1	20
1186762	1 1/2"	1	15
1186763	2"	1	6

ART. 28

Manicotto.
Yellow brass coupling.



Fig. 270

codice code	∅	conf./pack	
		⊗	⊠
1185657	3/8"	10	200
1185658	1/2"	10	240
1185659	3/4"	10	150
1185660	1"	10	100
1185661	1 1/4"	1	60
1185662	1 1/2"	1	50
1185663	2"	1	27

ART. 30

Nipples doppio.
Yellow brass nipples.



Fig. 280

codice code	∅	conf./pack	
		⊗	⊠
1185857	3/8"	10	400
1185858	1/2"	10	380
1185859	3/4"	10	240
1185860	1"	10	140
1185861	1 1/4"	1	70
1185862	1 1/2"	1	65
1185863	2"	1	36
1185884	2 1/2"	1	10
1185885	3"	1	3
1185887	4"	1	1



Fig. 280 PESANTE

ART. 32

Nipples pesante conico tipo navale.
Heavy yellow brass nipples.

codice code	∅	conf./pack	
		⊗	⊠
1185892	1/2"	10	250
1185893	3/4"	10	150
1185894	1"	10	80



Fig. 290

ART. 34

Tappo vite maschio.
Yellow brass M cap.

codice code	∅	conf./pack	
		⊗	⊠
1185756	1/4"	10	1000
1185757	3/8"	10	750
1185758	1/2"	10	650
1185759	3/4"	10	400
1185760	1"	10	230
1185761	1 1/4"	1	80
1185762	1 1/2"	1	80
1185763	2"	1	60



Fig. 300

ART. 36

Tappo vite femmina.
Yellow brass F cap.

codice code	∅	conf./pack	
		⊗	⊠
1186557	3/8"	10	600
1186558	1/2"	10	600
1186559	3/4"	10	350
1186560	1"	10	200
1186561	1 1/4"	1	150
1186562	1 1/2"	1	100
1186563	2"	1	60

ART. 38

Bocchettone dritto F.F. sede conica.
Yellow brass F.F. conic pipe union.



Fig. 340

codice code	∅	conf./pack	
		⊗	⊠
1185158	1/2"	10	70
1185159	3/4"	10	40
1185160	1"	10	40
1185161	1 1/4"	1	28
1185162	1 1/2"	1	15
1185163	2"	1	12

ART. 40

Bocchettone dritto M.F. sede conica.
Yellow brass M.F. conic pipe union.



Fig. 341

codice code	∅	conf./pack	
		⊗	⊠
1185108	1/2"	10	80
1185109	3/4"	10	50
1185110	1"	10	30
1185111	1 1/4"	1	22
1185112	1 1/2"	1	16
1185113	2"	1	10

ART. 42

Tutta vite.
Yellow brass nipple.



Fig. 531

codice code	∅	conf./pack	
		⊗	⊠
1185873	1/2"	10	300
1185874	3/4"	10	250
1185875	1"	10	100
1185876	1 1/4"	1	70
1185877	1 1/2"	1	70
1185878	2"	1	40

ART. 50

Nipples doppio ridotto.
Yellow brass reducing nipple.



Fig. 245

codice code	∅	conf./pack	
		⊗	⊠
1186058	1/2"x3/8"	10	400
1186059	3/4"x1/2"	10	280
1186061	1"x1/2"	10	130
1186060	1"x3/4"	10	130
1186068	1 1/4x1"	1	60
1186073	1 1/2x1"	1	90
1186069	1 1/2x1 1/4"	1	50
1186071	2"x1 1/4"	1	40
1186072	2"x1 1/2"	1	40

ART. 44

Distribuzione a 4 vie.
Yellow brass reducing coupling.



Fig. 223

codice code	∅	conf./pack	
		⊗	⊠
1186608	1/2"	10	60
1186609	3/4"	10	40
1186610	1"	10	25
1186611	1 1/4"	1	15
1186612	1 1/2"	1	10

ART. 52

Bocchettone diritto M.F. con OR.
O-ring seal straight yellow brass pipe union.



codice code	∅	conf./pack	
		⊗	⊠
1181208	1/2"	10	150
1181209	3/4"	10	80
1181210	1"	10	50
1181211	1 1/4"	1	34
1181212	1 1/2"	1	20
1181213	2"	1	11

ART. 46

Manicotto ridotto F.F..
Yellow brass reducing coupling.



Fig. 240

codice code	∅	conf./pack	
		⊗	⊠
1185558	1/2"x3/8"	10	340
1185559	3/4"x1/2"	10	160
1185560	1"x1/2"	10	120
1185561	1"x3/4"	10	90
1185562	1 1/4x1"	1	60
1185564	1 1/2x1"	1	40
1185563	1 1/2x1 1/4"	1	40
1185565	2"x1 1/4"	1	40
1185566	2"x1 1/2"	1	40

ART. 54

Bocchettone curvo M.F con OR.
O-ring seal bent yellow brass pipe union.



codice code	∅	conf./pack	
		⊗	⊠
1181408	1/2"	10	80
1181409	3/4"	10	50
1181410	1"	10	34
1181411	1 1/4"	1	20
1181412	1 1/2"	1	14
1181413	2"	1	6

ART. 48

Riduzione M.F.
Yellow brass reducer.



Fig. 241

codice code	∅	conf./pack	
		⊗	⊠
1186455	1/2"x1/4"	10	600
1186457	1/2"x3/8"	10	600
1186458	3/4"x1/2"	10	350
1186463	1"x1/2"	10	180
1186459	1"x3/4"	10	180
1186471	1 1/4x1/2"	1	100
1186450	1 1/4x3/4"	1	100
1186460	1 1/4x1"	1	100
1186451	1 1/2x3/4"	1	80
1186470	1 1/2x1"	1	90
1186461	1 1/2x1 1/4"	1	80
1186464	2"x1"	1	50
1186465	2"x1 1/4"	1	50
1186462	2"x1 1/2"	1	50
1186473	2 1/2x2"	1	20
1186474	3"x2"	1	10
1186480	4"x3"	1	1

ART. 56

Raccordo portagomma tipo ROMA maschio.
ROMA male hose connector.



codice code	∅	conf./pack	
		⊗	⊠
2346407	3/8"x15	10	300
2346413	1/2"x14	10	400
2346412	1/2"x15	10	400
2346418	1/2"x20	10	280
2346409	3/4"x20	10	180
2346408	3/4"x25	10	130
2346410	1"x25	10	100
2346416	1"x30	10	90
2346422	1 1/4x30	1	80
2346424	1 1/4x40	1	12
2346423	1 1/4x35	1	80
2346420	1 1/2x40	1	48
2346460	2"x50	1	30
2346462	2"x60	1	5
2346461	2 1/2x60	1	14

• ART.56 ALTRE MISURE DISPONIBILI VEDI LISTINO

ART. 58

Raccordo portagomma tipo Roma
Femmina in ottone giallo.
Roma Female hose connector.

codice code	∅	conf./pack	
		🔑	📦
2346470	1/4"x13	10	50
2346472	3/8"x15	10	30
2346429	1/2"x15	10	50
2346431	1/2"x18	10	40
2346434	3/4"x20	10	25
2346435	3/4"x25	10	20
2346439	1"x30	10	25
2346442	1"1/4x35	10	15
2346443	1"1/2x40	10	12
2346480	2"x50	10	6

ART. 62

Ghiera in ottone giallo.
Yellow brass reducer.

codice code	∅	conf./pack	
		🔑	📦
1187507	1/2"x3/8"	10	1000
1187508	3/4"x1/2"	10	800
1187510	1"x3/4"	10	500

ART. 64

Controdado piano.
Yellow brass lock nut.

codice code	∅	conf./pack	
		🔑	📦
1168008	1/2"	10	1000
1168009	3/4"	10	750
1168010	1"	10	600

ART. 68

Raccordo a 5 vie 1".
5 ways pipe fitting.

codice code	∅	conf./pack	
		🔑	📦
2262010	72	10	50
2262050	92	10	50

ART. 70

Prolunga in ottone giallo.
Yellow brass extensions.

codice code	cm x ∅	conf./pack	
		🔑	📦
1187117	1x3/8"	10	500
1187127	2x3/8"	10	300
1187137	3x3/8"	10	200
1187147	4x3/8"	10	150
1187157	5x3/8"	10	150
1187118	1x1/2"	10	450
1187121	1,5x1/2"	10	350
1187128	2x1/2"	10	280
1187132	2,5x1/2"	10	200
1187138	3x1/2"	10	200
1187148	4x1/2"	10	150
1187158	5x1/2"	10	150
1187168	6x1/2"	10	100
1187119	1x3/4"	10	350
1187122	1,5x3/4"	10	270
1187129	2x3/4"	10	200
1187139	3x3/4"	10	150
1187149	4x3/4"	10	100
1187159	5x3/4"	10	100
1187110	1x1"	10	160
1187123	1,5x1"	10	150
1187130	2x1"	10	100
1187140	3x1"	10	90

ART. 72

Prolunga in ottone giallo pesante.
Heavy yellow brass extension.

codice code	cm x ∅	conf./pack	
		🔑	📦
1187200	1x1/2"	10	450
1187201	1,5x1/2"	10	350
1187202	2x1/2"	10	250
1187203	3x1/2"	10	200

ART. 76

Prolunga ridotta M.F.
M.F. yellow brass reduced extension.

codice code	∅	conf./pack	
		🔑	📦
0168307	3/8"x1/2"	10	500
0168308	1/2"x3/4"	10	320
0168310	1/2"x1"	10	150
0168309	3/4"x1"	10	150

ART. 78

Barilotto 2 filetti.
Yellow brass two thread expansion bolts.

codice code	∅	conf./pack	
		🔑	📦
1187308	6x1/2"	10	200
1187408	10x1/2"	10	120
1187309	6x3/4"	10	120
1187409	10x3/4"	10	80
1187310	6x1"	10	80
1187410	10x1"	10	50
1187311	6x1"1/4	1	50
1187411	10x1"1/4	1	40
1187412	10x1"1/2	1	30

ART. 82

Raccordo per pompa excelsior curvo.
Excelsior pump bent pipe fitting.

codice code	∅	conf./pack	
		🔑	📦
1180209	3/4"x20	10	50
1180214	3/4"x25	10	15
1180210	1"x25	10	12
1180219	1"x30	10	30
1180211	1"1/4x30	1	10
1180212	1"1/2x40	1	10
1180213	2"x50	1	5

ART. 84

Raccordo per pompa excelsior dritto.
Excelsior pump straight pipe fitting.

codice code	∅	conf./pack	
		🔑	📦
1180409	3/4"x20	10	80
1180414	3/4"x25	10	15
1180415	1"x25	10	15
1180419	1"x30	10	30
1180411	1"1/4x30	1	30
1180412	1"1/2x40	1	10
1180413	2"x50	1	6

ART. 86

Raccordo porta gomma 3 pezzi
sede conica.
Conic seat 3 part hose connector.

codice code	∅	conf./pack	
		🔑	📦
0220720	20x20	1	15
0220725	25x25	1	20
0220730	30x30	1	10



Fig. 310



Fig. 246





ART. 100

Raccordo ottone per vaso eternit dritto.
Eternit bowl straight brass pipe fitting.

codice code	Ø	conf./pack	
		🔧	📦
1182408	1/2"	10	20
1182409	3/4"	10	15
1182410	1"	10	10
1182411	1"1/4	1	4
1182412	1"1/2	1	3
1182413	2"	1	1



ART. 104

Piletta per cassoni.
Tank drains.

codice code	Ø	conf./pack	
		🔧	📦
1187708	1/2"	1	20
1187709	3/4"	1	20
1187710	1"	1	10



ART. 110

Saracinesca tipo normale PN 10.
PN 10 brass gate valve.

codice code	Ø	conf./pack	
		🔧	📦
1107008	1/2"	20	120
1107009	3/4"	20	80
1107010	1"	15	60
1107011	1"1/4	10	40
1107012	1"1/2	12	48
1107013	2"	3	12
1107014	2"1/2	1	12
1107015	3"	1	8
1107017	4"	1	4



ART. 114

Filtro raccogliatore impurità.
Steve brass filter.

codice code	Ø	conf./pack	
		🔧	📦
2322408	1/2"	20	240
2322409	3/4"	20	120
2322410	1"	15	90
2322411	1"1/4	6	36
2322412	1"1/2	2	24
2322413	2"	2	12



ART. 116

Valvola a clapet tenuta metallica.
Metal seat clapet valve.

codice code	Ø	conf./pack	
		🔧	📦
2321808	1/2"	18	216
2321809	3/4"	10	120
2321810	1"	8	96
2321811	1"1/4	6	36
2321812	1"1/2	4	24
2321813	2"	3	18

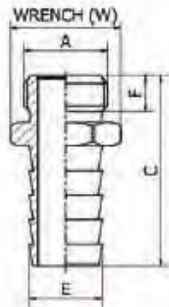


ART. 120

Presca rapida in ottone.
Brass clamp.

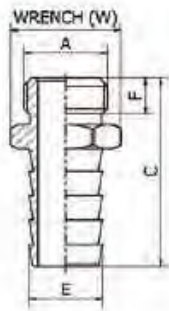
codice code	Ø	conf./pack	
		🔧	📦
1202008	1/2"x1/2"	10	120

Art.146 Portagomma maschio con OR, PESANTE *Male hose connector with OR, HEAVY model*



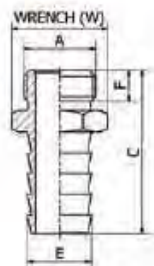
Misura	A	E	F	W	C	gr.	Inner	box
3/8" x 14,5	3/8"	14,5	7,5	19	39	27	50	50
3/4" x 19	3/4"	19	11	32	44	65	66	396
3/4" x 25	3/4"	25	11	32	50	84	24	270
1" x 19	1"	19	12	37	46	80	50	300
1" x 25	1"	25	12	37	51	100	45	270
1" x 30	1"	30	12	37	52	100	40	240

Art.147 Portagomma maschio con OR *Male hose connector with OR*



Misura	A	E	F	W	C	gr.	Inner	box
1/2" x 20	1/2"	20	9	24	40	32	40	560
3/4" x 20	3/4"	20	9	30	39	46	50	400
3/4" x 25	3/4"	25	9	29	46	48	60	300
1" x 20	1"	19	11	34	42	58	50	400
1" x 25	1"	25	11	34	47	66	50	300

Art.149 Portagomma M. con OR EXTRA pesante *Male hose connector with OR, EXTRA heavy model*



Con gola di aggrappaggio
With clamping groove

Misura	A	E	gr.	Inner	box
3/4" x 19	3/4"	19	80	66	396
3/4" x 25	3/4"	25	98	45	270
1" x 19	1"	19	102	50	300
1" x 25	1"	25	122	40	240

Art.144 Boccola in alluminio *Aluminium bush*



- BOCCOLE ALLUMINIO VEDI PAG. 181 CAT. HSR

FLANGIA IN OTTONE:

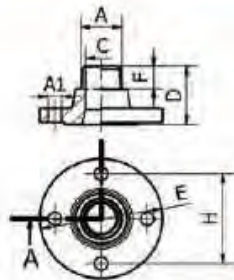
Art.880

Flangia OTTONE maschio PN 16

BRASS Male flange PN 16



Filettatura ISO 7



Threads ISO7

Misura	A	C / DN	A1	D	E	H	box
1/2" x 15	1/2"	15	14	42	95	65	1
3/4" x 20	3/4"	20	14	47	105	75	1
1" x 25	1"	25	14	52	115	85	1
1.1/4" x 32	1.1/4"	32	18	57	140	100	1
1.1/2" x 40	1.1/2"	40	14	57	160	110	1
2" x 50	2"	50	14	63	165	125	1
2.1/2" x 65	2.1/2"	65	14	68	185	145	1
3" x 80	3"	80	18	74	200	160	1
4" x 100	4"	100	18	82	220	180	1

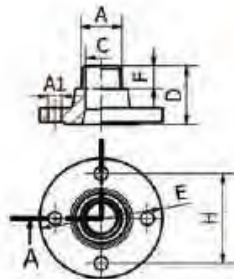
Art.881

Flangia OTTONE maschio PN 6

BRASS Male flange PN 6



Filettatura ISO 7



Threads ISO7

Misura	A	C / DN	A1	D	E	H	gr.	box
1/2" x 15	1/2"	15	11	38	80	55	394	1
3/4" x 20	3/4"	20	11	43	90	65	584	1
1" x 25	1"	25	11	49	100	75	752	1
1.1/4" x 32	1.1/4"	32	14	53	120	90	1435	1
1.1/2" x 40	1.1/2"	40	14	53	130	100	1610	1
2" x 50	2"	50	14	57	140	110	1798	1
2.1/2" x 65	2.1/2"	65	14	60	160	130	2239	1
3" x 80	3"	80	18	62	190	150	3772	1
4" x 100	4"	100	18	66	210	170	4097	1

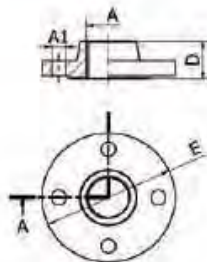
Art.885

Flangia OTTONE femmina PN 16

BRASS Female flange PN 16



Filettatura ISO 7



Threads ISO7

Misura	A	C / DN	A1	D	E	H	box
1/2" x 15	1/2"	15	14	27,5	95	65	1
3/4" x 20	3/4"	20	14	30,5	105	75	1
1" x 25	1"	25	14	31,5	115	85	1
1.1/4" x 32	1.1/4"	32	18	37,5	140	100	1
1.1/2" x 40	1.1/2"	40	14	37,5	150	110	1
2" x 50	2"	50	14	37,5	165	125	1
2.1/2" x 65	2.1/2"	65	14	38	185	145	1
3" x 80	3"	80	18	40	200	160	1
4" x 100	4"	100	18	44	220	180	1

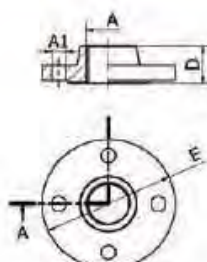
Art.886

Flangia OTTONE femmina PN 6

BRASS Female flange PN 6



Filettatura ISO 7



Threads ISO7

Misura	A	C / DN	A1	D	E	H	box
1/2" x 15	1/2"	15	11	25	80	55	1
3/4" x 20	3/4"	20	11	28,5	90	65	1
1" x 25	1"	25	11	29	100	75	1
1.1/4" x 32	1.1/4"	32	14	34,5	120	90	1
1.1/2" x 40	1.1/2"	40	14	32,5	130	100	1
2" x 50	2"	50	14	33	140	110	1
2.1/2" x 65	2.1/2"	65	14	33,5	160	130	1
3" x 80	3"	80	18	35	190	150	1
4" x 100	4"	100	18	36	210	170	1

RACCORDI IN OTTONE CROMATO:



Fig. 90

ART. 240

Gomito a 90° F.F. in ottone cromato.
FF Chromium-plated brass elbow joint.

codice code	∅	conf./pack	
		⊗	⊗
1185007	3/8"	10	200
1185008	1/2"	10	140
1185009	3/4"	10	80
1185010	1"	10	50



Fig. 92

ART. 242

Gomito a 90° M.F. in ottone cromato.
Chromium-plated brass MF elbow joint.

codice code	∅	conf./pack	
		⊗	⊗
1185207	3/8"	10	150
1185208	1/2"	10	170
1185209	3/4"	10	100
1185210	1"	10	50



Fig. 130

ART. 244

Tee in ottone cromato.
Chromium-plated brass tee.

codice code	∅	conf./pack	
		⊗	⊗
1185407	3/8"	10	100
1185408	1/2"	10	120
1185409	3/4"	10	70
1185410	1"	10	40



Fig. 270

ART. 246

Manicotto in ottone cromato.
Chromium-plated brass coupling.

codice code	∅	conf./pack	
		⊗	⊗
1185607	3/8"	10	300
1185608	1/2"	10	240
1185609	3/4"	10	150
1185610	1"	10	100



Fig. 290

ART. 248

Tappo in ottone cromato M.
M chromium-plated brass cap.

codice code	∅	conf./pack	
		⊗	⊗
1185707	3/8"	10	750
1185708	1/2"	10	650
1185709	3/4"	10	400
1185710	1"	10	230



Fig. 300

ART. 250

Tappo in ottone cromato F.
F chromium-plated brass cap.

codice code	∅	conf./pack	
		⊗	⊗
1186507	3/8"	10	500
1186508	1/2"	10	600
1186509	3/4"	10	350
1186510	1"	10	200



Fig. 280

ART. 252

Nipples in ottone cromato.
Chromium-plated brass nipples.

codice code	∅	conf./pack	
		⊗	⊗
1185806	1/4"	10	500
1185807	3/8"	10	400
1185808	1/2"	10	380
1185809	3/4"	10	240
1185810	1"	10	140



Fig. 245

ART. 254

Nipples di riduzione in ottone cromato.
Reduced chromium-plated brass nipples.

codice code	∅	conf./pack	
		⊗	⊗
1186007	3/8"x1/4"	10	400
1186008	1/2"x3/8"	10	400
1186009	3/4"x1/2"	10	280
1186010	1"x3/4"	10	130



Fig. 241

ART. 256

Riduzione in ottone cromato.
MF chromium-plated brass reducer.

codice code	∅	conf./pack	
		⊗	⊗
1186407	3/8"x1/4"	10	600
1186408	1/2"x3/8"	10	600
1186409	3/4"x1/2"	10	350
1186406	1"x1/2"	10	180
1186410	1"x3/4"	10	180



Fig. 246

ART. 258

Prolunga ridotta MF in ottone cromato.
MF chromium-plated brass extension.

codice code	∅	conf./pack	
		⊗	⊗
0168207	3/8"x1/2"	10	500
0168208	1/2"x3/4"	10	320
0168209	3/4"x1"	10	150



ART. 260

Prolunga in ottone cromato.
Chromium-plated brass extension.

codice code	∅	conf./pack	
		⊗	⊗
1187018	cm.1x1/2"	10	450
1187020	cm.1.5x1/2"	10	350
1187028	cm.2x1/2"	10	280
1187038	cm.3x1/2"	10	200
1187048	cm.4x1/2"	10	150
1187058	cm.5x1/2"	10	150
1187068	cm.6x1/2"	10	100
1187088	cm.8x1/2"	10	100
1187098	cm.10x1/2"	10	100
1187039	cm.3x3/4"	10	150
1187049	cm.4x3/4"	10	120



PESANTE

ART. 262

Prolunga in ottone cromato pesante.
Heavy chromium-plated brass extensions.

codice code	∅	conf./pack	
		⊗	⊗
1187060	cm.1x1/2"	10	450
1187062	cm.2x1/2"	10	250
1187063	cm.3x1/2"	10	200
1187064	cm.4x1/2"	10	200
1187065	cm.5x1/2"	10	150



ART. 264

Riduzione ottone cromato.
MF chromium-plated brass reducer.

codice code	∅	conf./pack	
		⊗	⊗
0168111	M1"XF1"1/4	10	100
0168112	M1"1/4XF1"1/2	10	80

RACCORDI IN ACCIAIO INOX AISI316 / AISI 304:



Fig. 90

ART. 400

Gomito F.F. AISI 316.
AISI 316 F.F. elbow.

codice code	Ø	conf./pack	
		⊗	⊗
1300205	1/8"	10	400
1300206	1/4"	10	400
1300207	3/8"	10	240
1300208	1/2"	20	120
1300209	3/4"	10	70
1300210	1"	10	40
1300211	1 1/4"	6	30
1300212	1 1/2"	4	15
1300213	2"	2	10
1300214	2 1/2"	2	4
1300215	3"	2	3



Fig. 130

ART. 408

Tee AISI 316.
AISI 316 Tee.

codice code	Ø	conf./pack	
		⊗	⊗
1301605	1/8"	10	300
1301606	1/4"	10	250
1301607	3/8"	10	160
1301608	1/2"	20	80
1301609	3/4"	10	50
1301610	1"	10	30
1301611	1 1/4"	6	15
1301612	1 1/2"	4	14
1301613	2"	2	8
1301614	2 1/2"	2	4
1301615	3"	2	2



Fig. 92

ART. 402

Gomito M.F. AISI 316.
AISI 316 M.F. elbow.

codice code	Ø	conf./pack	
		⊗	⊗
1300105	1/8"	10	500
1300106	1/4"	10	350
1300107	3/8"	10	200
1300108	1/2"	20	140
1300109	3/4"	10	100
1300110	1"	10	50
1300111	1 1/4"	6	20
1300112	1 1/2"	4	20
1300113	2"	2	10
1300114	2 1/2"	2	4
1300115	3"	2	2



Fig. 180

ART. 410

Croce AISI 316.
AISI 316 cross.

codice code	Ø	conf./pack	
		⊗	⊗
1308306	1/4"	10	160
1308307	3/8"	10	120
1308308	1/2"	20	60
1308309	3/4"	10	36
1308310	1"	10	20
1308311	1 1/4"	6	16
1308312	1 1/2"	4	10
1308313	2"	2	6



Fig. 96

ART. 404

Bocchettone conico curvo F.F. AISI 316.
AISI 316 F.F. bent pipe union.

codice code	Ø	conf./pack	
		⊗	⊗
1300308	1/2"	20	50
1300309	3/4"	10	40
1300310	1"	10	20
1300311	1 1/4"	6	15
1300312	1 1/2"	4	12
1300313	2"	2	10



Fig. 280

ART. 412

Niplo AISI 316.
AISI 316 nipple.

codice code	Ø	conf./pack	
		⊗	⊗
1303005	1/8"	10	700
1303006	1/4"	10	400
1303007	3/8"	10	400
1303008	1/2"	20	200
1303009	3/4"	10	100
1303010	1"	10	60
1303011	1 1/4"	6	40
1303012	1 1/2"	4	30
1303013	2"	2	27
1303014	2 1/2"	2	12
1303015	3"	2	8



Fig. 98

ART. 406

Bocchettone conico curvo M.F. AISI 316.
AISI 316 M.F. bent pipe union.

codice code	Ø	conf./pack	
		⊗	⊗
1300358	1/2"	20	40
1300359	3/4"	10	30
1300360	1"	10	14
1300361	1 1/4"	6	12
1300362	1 1/2"	4	8
1300363	2"	2	6



Fig. 290

ART. 414

Tappo M AISI 316.
AISI 316 M plug.

codice code	Ø	conf./pack	
		⊗	⊗
1303205	1/8"	10	800
1303206	1/4"	10	550
1303207	3/8"	10	500
1303208	1/2"	20	300
1303209	3/4"	10	200
1303210	1"	10	120
1303211	1 1/4"	6	80
1303212	1 1/2"	4	50
1303213	2"	2	30
1303214	2 1/2"	2	24
1303215	3"	2	16



Fig. 300

ART. 416

Tappo F AISI 316.
AISI 316 F plug.

codice code	∅	conf./pack	
		⊗	⊗
1303305	1/8"	10	600
1303306	1/4"	10	600
1303307	3/8"	10	350
1303308	1/2"	20	240
1303309	3/4"	10	160
1303310	1"	10	100
1303311	1 1/4"	6	60
1303312	1 1/2"	4	40
1303313	2"	2	30
1303314	2 1/2"	2	20
1303315	3"	2	9



Fig. 241

ART. 424

Riduzione AISI 316.
AISI 316 reducer.

codice code	∅	conf./pack	
		⊗	⊗
1302501	1/4"x1/8"	10	550
1302502	3/8"x1/8"	10	500
1302503	3/8"x1/4"	10	500
1302504	1/2"x1/8"	10	300
1302505	1/2"x1/4"	10	300
1302506	1/2"x3/8"	10	300
1302508	3/4"x1/4"	10	200
1302509	3/4"x3/8"	10	200
1302510	3/4"x1/2"	10	200
1302513	1"x1/2"	10	120
1302514	1"x3/4"	10	120
1302516	1 1/4x1/2"	10	80
1302517	1 1/4x3/4"	10	80
1302518	1 1/4x1"	10	80
1302521	1 1/2x3/4"	10	50
1302522	1 1/2x1"	10	50
1302523	1 1/2x1 1/4"	10	50
1302527	2"x1"	10	30
1302528	2"x1 1/4"	10	30
1302529	2"x1 1/2"	10	30
1302531	2 1/2x1 1/2"	10	24
1302530	2 1/2x2"	10	24
1302541	3"x2"	10	16
1302542	3"x2 1/2"	10	16



Fig. 340

ART. 418

Bocchettone conico F.F. diritto.
AISI 316 F.F. conic pipe union.

codice code	∅	conf./pack	
		⊗	⊗
1304105	1/8"	10	120
1304106	1/4"	10	120
1304107	3/8"	10	100
1304108	1/2"	20	80
1304109	3/4"	10	60
1304110	1"	10	30
1304111	1 1/4"	6	20
1304112	1 1/2"	4	18
1304113	2"	2	16
1304114	2 1/2"	1	6
1304115	3"	1	4



Fig. 341

ART. 420

Bocchettone conico M.F. diritto.
AISI 316 M.F. conic pipe union.

codice code	∅	conf./pack	
		⊗	⊗
1304205	1/8"	10	120
1304206	1/4"	10	120
1304207	3/8"	10	100
1304208	1/2"	20	60
1304209	3/4"	10	40
1304210	1"	10	30
1304211	1 1/4"	6	20
1304212	1 1/2"	4	10
1304213	2"	2	10
1304214	2 1/2"	2	5
1304215	3"	2	2



Fig. 245

ART. 426

Vite doppia ridotta AISI 316.
AISI 316 double reduced screw.

codice code	∅	conf./pack	
		⊗	⊗
1302957	1/4"x1/8"	10	400
1302959	3/8"x1/4"	10	400
1302980	1/2"x1/8"	10	200
1302960	1/2"x1/4"	10	200
1302961	1/2"x3/8"	10	200
1302982	3/4"x1/4"	10	100
1302962	3/4"x1/2"	10	100
1302963	1"x1/2"	10	60
1302964	1"x3/4"	10	60
1302968	1 1/4x1"	10	40
1302970	1 1/2x1"	10	30
1302972	1 1/2x1 1/4"	10	30
1302973	2"x1"	10	27
1302974	2"x1 1/4"	10	27
1302975	2"x1 1/2"	10	27



Fig. 531

ART. 422

Tuttavite AISI 316.
AISI 316 nipple.

codice code	∅	conf./pack	
		⊗	⊗
1304506	1/4"	10	500
1304507	3/8"	10	300
1304508	1/2"	20	150
1304509	3/4"	10	100
1304510	1"	10	50
1304511	1 1/4"	6	30
1304512	1 1/2"	4	20
1304513	2"	2	18



ART. 428

Controdado inox AISI 316.
AISI 316 back nut.

codice code	∅	conf./pack	
		⊗	⊗
1307905	3/8"	10	1000
1307906	1/4"	10	800
1307907	3/8"	10	500
1307908	1/2"	10	300
1307909	3/4"	10	250
1307910	1"	10	150
1307911	1 1/4"	10	120
1307912	1 1/2"	10	80
1307913	2"	10	40

ART. 450

Barilotto AISI 316.
AISI 316 expansion bolt.

codice code	Ø	mm	conf./pack	
			⊗	⊠
1308156	1/4"	40	10	500
1308157	3/8"	40	10	300
1308158	1/2"	60	20	150
1308159	3/4"	60	10	100
1308285	1"	80	10	50
1308286	1 1/4"	80	6	30
1308162	1 1/2"	80	4	20
1308163	2"	100	2	18

ART. 452

Tronchetto a saldare AISI 316.
Aisi 316 trunk to be welded

codice code	Ø	mm	conf./pack	
			⊗	⊠
1308206	1/4"	3,0	10	250
1308207	3/8"	3,0	10	300
1308208	1/2"	3,5	20	240
1308209	3/4"	4,0	10	120
1308210	1"	4,0	10	80
1308211	1 1/4"	5,0	6	40
1308212	1 1/2"	5,0	4	40
1308213	2"	5,0	2	30
1308214	2 1/2"	6,0	1	18
1308215	3"	7,0	1	12
1308217	4"	8,0	1	4

ART. 454

Manicotto a saldare AISI 316.
AISI 316 coupling to be welded.

codice code	Ø	conf./pack
		⊗ ⊠
1302805	1/8"	10 800
1302806	1/4"	10 350
1302807	3/8"	10 320
1302808	1/2"	20 240
1302809	3/4"	10 100
1302810	1"	10 60
1302811	1 1/4"	6 40
1302812	1 1/2"	4 40
1302813	2"	2 18
1302814	2 1/2"	1 12
1302815	3"	1 8
1302817	4"	1 4

ART. 456

Mezzo manicotto a saldare AISI 316.
AISI 316 half coupling to be welded.

codice code	Ø	conf./pack
		⊗ ⊠
1303105	1/8"	10 650
1303106	1/4"	10 600
1303107	3/8"	10 450
1303108	1/2"	20 250
1303109	3/4"	10 200
1303110	1"	10 100
1303111	1 1/4"	6 60
1303112	1 1/2"	4 45
1303113	2"	2 30
1303114	2 1/2"	2 24

ART. 458

Portagomma M AISI 316.
AISI 316 hose connector.

codice code	Ø	conf./pack
		⊗ ⊠
1308006	1/4"x9	10 400
1308007	3/8"x10	10 350
1308008	1/2"x13,5	20 150
1308009	3/4"x20	10 100
1308010	1"x27	10 40
1308011	1 1/4"x33,5	6 30
1308012	1 1/2"x40	4 20
1308013	2"x52	4 15
1308014	2 1/2"x65	2 6

- ART.458 ALTRE MISURE DISPONIBILI VEDI LISTINO

ART. 500

Valvola a sfera AISI 316.
AISI 316 ball valve.

codice code	Ø	conf./pack
		⊗ ⊠
1102806	1/4"	10 24
1102807	3/8"	10 24
1102808	1/2"	10 24
1102809	3/4"	10 16
1102810	1"	6 8
1102811	1 1/4"	4 6
1102812	1 1/2"	2 4
1102813	2"	1 2
1102814	2 1/2"	1 1
1102815	3"	1 1

ART. 502

Valvola di ritagno in acciaio inox AISI 304 stampata tenuta NBR, pressione nominale 16 BAR. Temperatura di esercizio -25°C+90°C.
Stainless steel AISI 304 check valve.

codice code	Ø	conf./pack
		⊗
2320605	1/2"	12
2320609	3/4"	8
2320610	1"	8
2320611	1 1/4"	6
2320612	1 1/2"	6
2320613	2"	4
2320614	2 1/2"	1
2320615	3"	1
2320617	4"	1

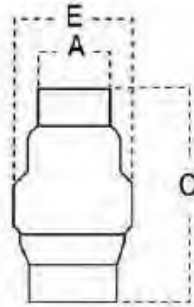
ART. 504

Collare in acciaio inox AISI 304 con tassello.
304 stainless steel brackets with plug.

codice code	Ø	conf./pack
		⊗
1143408	1/2"	100
1143409	3/4"	100
1143410	1"	50
1143411	1 1/4"	50
1143412	1 1/2"	50
1143413	2"	50
1143414	2 1/2"	20
1143415	3"	20

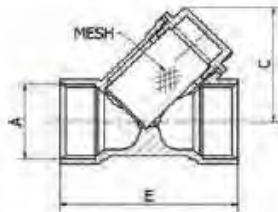
VALVOLE – RUBINETTI IN ACCIAIO INOX AISI316 / AISI 304:

Art.2134 Valvola di ritegno "EURO INOX", AISI 316 *Check valve "EURO INOX", AISI 316*



Misura	A	E	C	box
3/8"	3/8"	30	54	1
1/2"	1/2"	34,5	57	1
3/4"	3/4"	41,5	64	1
1"	1"	48	75	1
1.1/4"	1.1/4"	60,5	82	1
1.1/2"	1.1/2"	71	93	1
2"	2"	87	100	1
2.1/2"	2.1/2"			1
3"	3"			1
4"	4"			1

Art.2520 Filtro a Y *Y filter*

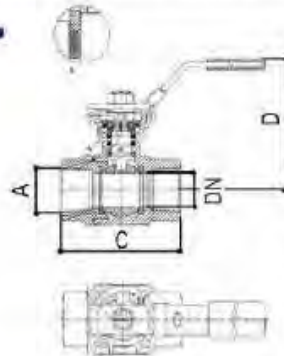


Misura	PN	A	E	C	gr.	box
1/4"	40	1/4"	65	30	29	10
3/8"	40	3/8"	65	30	21	10
1/2"	40	1/2"	65	40	22	10
3/4"	40	3/4"	80	45	35	10
1"	40	1"	90	55	66	10
1.1/4"	40	1.1/4"	105	65	77	5
1.1/2"	40	1.1/2"	120	70	115	4
2"	40	2"	140	85	176	2

Art.2000 Valvola a sfera PESANTE, att. attuatore *HEAVY ball valve F/F with actuator connection*



INOX 316 / AISI 316
Maniglia bloccabile / lock. handle
Attacco ISO 5211 | Pad ISO 5211
PN 70 | 1000 PSI



Misura - A	DN	PN	C	D	Nm	gr.	box
1/4"	10	70	65	73,5	4	573	2
3/8"	10	70	65	73,5	4	564	2
1/2"	15	70	65	73,5	5	583	2
3/4"	20	70	74,5	80	8	725	2
1"	25	70	88,5	95,5	12	1032	2
1.1/4"	32	70	102	100	18	1765	2
1.1/2"	40	70	110	126	22	2674	1
2"	50	70	125	134	26	3750	1
2.1/2"	64	70	161	167	50	6260	1
3"	73	70	148	176	150	9220	1
4"	90	70	220	195	250	14 kq	1

Art.2421 Valvola a sfera M.F. INOX 316 *Ball valve M.F. AISI 316*



INOX 316 / AISI 316

Misura	A	box
3/8"	3/8"	2
1/2"	1/2"	2
3/4"	3/4"	2
1"	1"	2
1.1/4"	1.1/4"	2
1.1/2"	1.1/2"	1
2"	2"	1

Art.2420

Valvola a sfera M.F. INOX 316

Ball valve M.F. AISI 316


INOX 316 / AISI 316

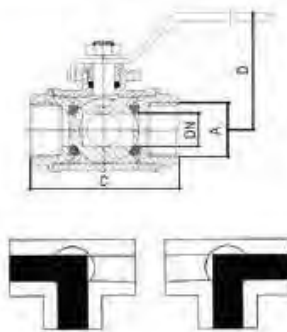
Misura	A	box
1/4"	1/4"	2
3/8"	3/8"	2
1/2"	1/2"	2
3/4"	3/4"	2
1"	1"	2

* Prezzi su richiesta / Prices on request

Art.2407

Valvola a sfera 3 Vie a L, F.F.F.

3-ways ball valve, F.F.F.

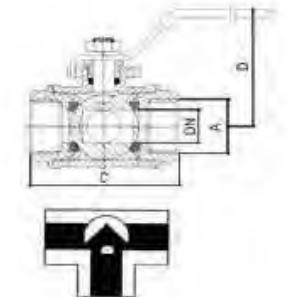
 INOX 316 / AISI 316
 Attacco per attuatore ISO 5211


Misura	A	DN	PN	C	D	box
1/4"	1/4"	4,2	70	64	32	2
3/8"	3/8"	6	70	64	32	2
1/2"	1/2"	10	70	68	34	2
3/4"	3/4"	15	70	78	60	2
1"	1"	20	70	86	60	1
1.1/4"	1.1/4"	25	70	111	76	1
1.1/2"	1.1/2"	32	70	126	85	1
2"	2"	40	70	143	95	1

Art.2408

Valvola a sfera 3 Vie a T, F.F.F.

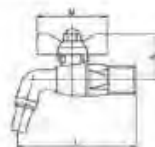
3-ways ball valve, F.F.F.

 INOX 316 / AISI 316
 Attacco per attuatore ISO 5211


Misura	A	DN	PN	C	D	box
1/4"	1/4"	4,2	70	64	32	2
3/8"	3/8"	6	70	64	32	2
1/2"	1/2"	10	70	68	34	2
3/4"	3/4"	15	70	78	60	2
1"	1"	20	70	86	60	1
1.1/4"	1.1/4"	25	70	111	76	1
1.1/2"	1.1/2"	32	70	126	85	1
2"	2"	40	70	143	95	1

Art.2330

Rubinetto a sfera curvo per botti AISI 316

Tank bibcock AISI 316


Misura	A	M	L	box
1/2"	35	50	87	5
3/4"	48	62	108	5

Art.2331

Rubinetto a sfera curvo per botti AISI 316

Tank bibcock AISI 316

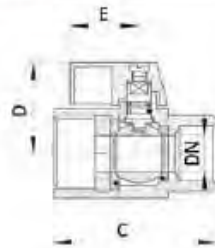
 CON O-RING SUL FILETTO
 WITH O-RING ON THREAD

Misura	A	M	L	box
3/8"	30	48	66	5
1/2"	30	48	66	5

Art.2460

Valvola minisfera F.F.

Ball valve "mini" F.F.



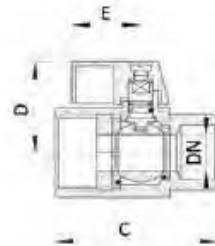
Misura - A	DN	PN	C	D	E	box
1/4"	7	70	42	26,5	22,8	10
3/8"	7	70	42	26,5	22,8	10
1/2"	9	70	46	28,3	22,8	10
3/4"	12,5	70	54	31,5	22,8	5
1"	15	70	65	34	22,8	5

* Prezzi su richiesta / Prices on request

Art.2465

Valvola minisfera M.F.

Ball valve "mini" M.F.

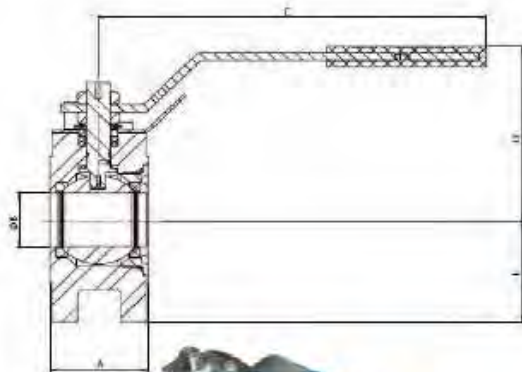


Misura - A	DN	PN	C	D	E	box
1/4"	7	70	42	26,5	22,8	10
3/8"	7	70	42	26,5	22,8	10
1/2"	9	70	46	28,3	22,8	10
3/4"	12,5	70	54	31,5	22,8	5
1"	15	70	65	34	22,8	5

* Prezzi su richiesta / Prices on request

VALVOLE A SFERA WAFER / WAFER BALL VALVES

PN 16-40 / ANSI 150



SIZE	32 1 1/4"	40 1 1/2"	50 2"	65 2 1/2"	80 3"	100 4"	125 5"	150 6"
A	51,2	64,2	80,2	104,2	118,2	150	182	236
B	ø28	ø38	ø49	ø62	ø74	ø100	ø118	ø150
C	171	260	260	333	333	427	427	472
D	101	119	127	147,5	158	174	189	227
E	65	70	75	90	102,5	115	127,5*	165
WEIGHT KG.	4	7	9	16	22	32	45	100

Dimensions in mm
*PN40: DN125 E 135



POS	DESCRIPTION	MATERIAL			SPARE PARTS (QTY)/3
1	BODY	Art.3100 WCB	Art.3106 CF8	Art.3110 CF8M	
2	CLOSURE	A105	304	316	
3	SEAT	PTFE	PTFE	PTFE	2
4	STEM	304	304	316	
5	BALL	304	304	316	ON REQUEST
6	GASKET	PTFE	PTFE	PTFE	1
7	TE SCREW	8,8	8,8	8,8	
8	CHEVRON	RPTFE	RPTFE	RPTFE	1
9	SPRING WASHER	C72	C72	C72	ON REQUEST
10	NUT	65	65	65	ON REQUEST
11	ANATOMIC LEVER	GALV. STEEL	GALV. STEEL	GALV. STEEL	ON REQUEST
12	LOCKING DEVICE	FE410	FE410	FE410	
13	TE SCREW	8,8	8,8	8,8	ON REQUEST
14	LEVER STOP	FE410	FE410	FE410	ON REQUEST
15	WASHER	304	304	304	
16	GASKET	GRAPHITE	GRAPHITE	GRAPHITE	1
17	O-RING	NBR	NBR	NBR	1
18	O-RING	NBR	NBR	NBR	1
19	ANTISTATIC SPRING	304	304	316	
20	ANTISTATIC BALL	304	304	316	

DN	Art.3100	Art.3105	Art.3110
DN15			
DN20			
DN25			
DN32			
DN40			
DN50			
DN65			
DN80			
DN100			
DN125			
DN150			



ART. 520

Curva a saldare mm. 2 AISI 304.
AISI 304 mm. 2 welding elbow.

codice code	DE	Ø	conf./pack ⊠
1308608	21,3	1/2"	1
1308609	26,9	3/4"	1
1308610	33,7	1"	1
1308611	42,4	1 1/4"	1
1308612	49,3	1 1/2"	1
1308613	60,3	2"	1
1308614	76,1	2 1/2"	1
1308615	88,9	3"	1
1308616	101,6	3 1/2"	1
1308617	114,3	4"	1



ART. 526

Tee a saldare mm. 2 AISI 304.
AISI 304 mm. 2 welding tee.

codice code	Ø DN	Ø GAS	conf./pack ⊠
1301508	15	1/2"	1
1301509	20	3/4"	1
1301510	25	1"	1
1301511	32	1 1/4"	1
1301512	40	1 1/2"	1
1301513	50	2"	1
1301514	65	2 1/2"	1
1301515	80	3"	1
1301517	100	4"	1



ART. 522

Riduzione concentrica AISI 304 spess.
2mm.
AISI 304 concentrics reductions.

codice code	Ø	conf./pack ⊠
1308230	26,9x21,3	1
1308231	33,7x21,3	1
1308232	33,7x26,9	1
1308223	42,4x26,9	1
1308235	42,4x26,9	1
1308234	42,4x33,7	1
1308237	48,3x33,7	1
1308224	48,3x42,4	1
1308225	60,3x26,9	1
1308226	60,3x33,7	1
1308238	60,3x42,4	1
1308239	60,3x48,3	1
1308218	76,1x33,7	1
1308219	76,1x42,4	1
1308220	76,1x48,3	1
1308221	76,1x60,3	1
1308227	88,9x33,7	1
1308228	88,9x42,4	1
1308249	88,9x48,3	1
1308229	88,9x60,3	1
1308240	88,9x76,1	1
1308253	114,3x48,3	1
1308248	114,3x60,3	1
1308254	114,3x76,1	1
1308242	114,3x88,9	1



ART. 530

Flangia piana acc. inox AISI 304
UNI 2277-2278 PN 10/16,
EN 1092 - 1/01
AISI 304 UNI 2277-2278 PN 10/16 EN
1092 - 1/01 stainless steel flat flanges.

codice code	DN	Ø	Fori	conf./pack ⊠
1143508	15	1/2"	4	10
1143509	20	3/4"	4	10
1143510	25	1"	4	10
1143511	32	1 1/4"	4	10
1143512	40	1 1/2"	4	10
1143513	50	2"	4	10
1143514	65	2 1/2"	4	4
1143515	80	3"	4	4
1143528	80	3"	8	4
1143517	100	4"	8	4
1143519	125	5"	8	2
1143521	150	6"	8	2
1143525	200	8"	8	2
1143530	200	8"	12	2



ART. 524

Fondello bombato AISI 304 spess.
2 mm.
AISI 304 rounded botton.

codice code	Ø DN	Ø GAS	conf./pack ⊠
1308808	15	1/2"	1
1308809	20	3/4"	1
1308810	25	1"	1
1308811	32	1 1/4"	1
1308812	40	1 1/2"	1
1308813	50	2"	1
1308814	65	2 1/2"	1
1308815	80	3"	1
1308817	100	4"	1



ART. 532

Cartella di appoggio spess. 2 mm.
AISI 304.
Lap-joint.

codice code	Ø DN	Ø	conf./pack ⊠
1308829	20	3/4"	1
1308830	25	1"	1
1308837	32	1 1/4"	1
1308832	40	1 1/2"	1
1308831	50	2"	1
1308833	65	2 1/2"	1
1308835	80	3"	1
1308834	100	4"	1

RACCORDI IN GHISA MALLEABILE UNI10242:1994



Fig. 1

ART. 600

Curva a 90° M.F.
Galvanized cast iron M.F. bent pipe.

codice code	∅	conf./pack	
		⊗	⊠
1020106	1/4"	10	250
1020107	3/8"	20	200
1020108	1/2"	50	180
1020109	3/4"	20	100
1020110	1"	20	40
1020111	1 1/4"	10	20
1020112	1 1/2"	10	20
1020113	2"	5	10
1020114	2 1/2"	2	4
1020115	3"	1	3
1020117	4"	1	2



Fig. 41

ART. 606

Curva a 45° F.F.
Galvanized cast iron F.F. 45° bent pipe.

codice code	∅	conf./pack	
		⊗	⊠
1020507	3/8"	10	250
1020508	1/2"	20	200
1020509	3/4"	50	120
1020510	1"	20	50
1020511	1 1/4"	20	40
1020512	1 1/2"	10	30
1020513	2"	5	15
1020514	2 1/2"	2	6
1020515	3"	1	3
1020517	4"	1	2



Fig. 2

ART. 602

Curva a 90° F.F.
Galvanized cast iron F.F. bent pipe.

codice code	∅	conf./pack	
		⊗	⊠
1020206	1/4"	10	250
1020207	3/8"	20	200
1020208	1/2"	50	180
1020209	3/4"	20	80
1020210	1"	20	40
1020211	1 1/4"	10	20
1020212	1 1/2"	10	15
1020213	2"	5	10
1020214	2 1/2"	2	4
1020215	3"	1	2
1020217	4"	1	2



Fig. 85

ART. 608

Curva di sorpasso F.F.
Galvanized cast iron cross over.

codice code	∅	conf./pack	
		⊗	⊠
1020608	1/2"	20	100
1020609	3/4"	20	60
1020610	1"	10	30



Fig. 90

ART. 610

Gomito 90° F.F.
Galvanized cast iron 90° F.F. elbow joint.

codice code	∅	conf./pack	
		⊗	⊠
1020706	1/4"	10	500
1020707	3/8"	30	400
1020708	1/2"	100	250
1020709	3/4"	50	140
1020710	1"	30	80
1020711	1 1/4"	10	40
1020712	1 1/2"	10	30
1020713	2"	10	18
1020714	2 1/2"	2	8
1020715	3"	2	6
1020717	4"	1	3
1020719	5"	1	2
1020721	6"	1	1



Fig. 40

ART. 604

Curva a 45° M.F.
Galvanized cast iron M.F. 45° bent pipe.

codice code	∅	conf./pack	
		⊗	⊠
1020406	1/4"	10	300
1020407	3/8"	20	250
1020408	1/2"	50	200
1020409	3/4"	20	120
1020410	1"	20	50
1020411	1 1/4"	10	40
1020412	1 1/2"	10	30
1020413	2"	5	15
1020414	2 1/2"	2	6
1020415	3"	1	3
1020417	4"	1	2



Fig. 92

ART. 612

Gomito 90° M.F.
Galvanized cast iron 90° M.F. elbow joint.

codice code	∅	conf./pack	
		⊗	⊠
1020906	1/4"	10	500
1020907	3/8"	30	400
1020908	1/2"	100	250
1020909	3/4"	50	140
1020910	1"	30	80
1020911	1 1/4"	10	40
1020912	1 1/2"	10	30
1020913	2"	10	16
1020914	2 1/2"	2	8
1020915	3"	2	6
1020917	4"	1	3
1020929	5"	1	1
1020931	6"	1	1



Fig. 95

ART. 614

Gomito a 90° F.F. con bocchettone a sede piana.

Galvanised cast iron flat seat bent pipe union.

codice code	∅	conf./pack	
		⊗	⊠
1021008	1/2"	50	100
1021009	3/4"	20	60
1021010	1"	20	40
1021011	1 1/4"	10	30
1021012	1 1/2"	10	20
1021013	2"	5	15



Fig. 96

ART. 616

Gomito a 90° F.F. con bocchettone a sede conica.

Galvanised cast iron conic seat F.F. bent pipe union.

codice code	∅	conf./pack	
		⊗	⊠
1021108	1/2"	50	100
1021109	3/4"	20	60
1021110	1"	20	40
1021111	1 1/4"	10	30
1021112	1 1/2"	10	20
1021113	2"	5	15
1021114	2 1/2"	1	3
1021115	3"	1	3



Fig. 97

ART. 618

Gomito a 90° M.F. con bocchettone a sede piana.

Galvanised cast iron flat seat M.F. bent pipe union.

codice code	∅	conf./pack	
		⊗	⊠
1021208	1/2"	20	80
1021209	3/4"	20	50
1021210	1"	10	30
1021211	1 1/4"	10	20
1021212	1 1/2"	10	15
1021213	2"	5	10



Fig. 98

ART. 620

Gomito a 90° M.F. con bocchettone a sede conica.

Galvanised cast iron conic seat M.F. bent pipe union.

codice code	∅	conf./pack	
		⊗	⊠
1021307	3/8"	20	100
1021308	1/2"	20	80
1021309	3/4"	20	50
1021310	1"	10	30
1021311	1 1/4"	10	20
1021312	1 1/2"	10	15
1021313	2"	5	10
1021314	2 1/2"	1	3
1021315	3"	1	3



Fig. 130

ART. 622

Tee a 90° F.F.

Galvanised cast iron F.F. tee.

codice code	∅	conf./pack	
		⊗	⊠
1021606	1/4"	10	300
1021607	3/8"	30	190
1021608	1/2"	100	150
1021609	3/4"	50	80
1021610	1"	30	50
1021611	1 1/4"	10	30
1021612	1 1/2"	10	20
1021613	2"	5	12
1021614	2 1/2"	2	8
1021615	3"	2	6
1021617	4"	1	3
1021619	5"	1	1
1021621	6"	1	1



Fig. 180

ART. 624

Croce a 90°.

Galvanised cast iron cross.

codice code	∅	conf./pack	
		⊗	⊠
1022107	3/8"	20	140
1022108	1/2"	50	100
1022109	3/4"	20	70
1022110	1"	20	40
1022111	1 1/4"	10	20
1022112	1 1/2"	10	15
1022113	2"	5	10
1022114	2 1/2"	1	6
1022115	3"	1	4
1022117	4"	1	2
1022119	5"	1	1
1022121	6"	1	1



Fig. 221

ART. 626

Distribuzione a gomito.

Galvanised cast iron elbow valve gears.

codice code	∅	conf./pack	
		⊗	⊠
1022207	3/8"	20	180
1022208	1/2"	50	150
1022209	3/4"	20	80
1022210	1"	20	50
1022211	1 1/4"	10	20
1022212	1 1/2"	10	20
1022213	2"	5	10



Fig. 223

ART. 628

Distribuzione a T.

Galvanised cast iron T-shaped valve gears.

codice code	∅	conf./pack	
		⊗	⊠
1022308	1/2"	50	120
1022309	3/4"	20	60
1022310	1"	20	40
1022311	1 1/4"	10	20
1022312	1 1/2"	10	20
1022313	2"	5	8



Fig. 270

ART. 630

Manicotto.

Galvanised cast iron coupling.

codice code	Ø	conf./pack	
		⌘	⊞
1022806	1/4"	20	600
1022807	3/8"	30	500
1022808	1/2"	100	340
1022809	3/4"	50	220
1022810	1"	20	120
1022811	1 1/4"	10	60
1022812	1 1/2"	10	50
1022813	2"	5	24
1022814	2 1/2"	2	22
1022815	3"	2	18
1022817	4"	1	6
1022818	5"	1	3
1022821	6"	1	2



Fig. 280

ART. 632

Nipplo doppio.

Galvanised cast iron nipple.

codice code	Ø	conf./pack	
		⌘	⊞
1023006	1/4"	20	600
1023007	3/8"	30	500
1023008	1/2"	100	350
1023009	3/4"	50	250
1023010	1"	20	130
1023011	1 1/4"	10	70
1023012	1 1/2"	10	60
1023013	2"	5	30
1023014	2 1/2"	2	24
1023015	3"	2	18
1023017	4"	1	6
1023018	5"	1	4
1023021	6"	1	2



Fig. 290

ART. 634

Tappo maschio con bordo.

Galvanised cast iron male cap.

codice code	Ø	conf./pack	
		⌘	⊞
1023206	1/4"	20	1000
1023207	3/8"	30	800
1023208	1/2"	100	800
1023209	3/4"	50	400
1023210	1"	20	250
1023211	1 1/4"	10	160
1023212	1 1/2"	10	130
1023213	2"	5	60
1023214	2 1/2"	2	50
1023215	3"	2	26
1023217	4"	1	18
1023219	5"	1	1
1023221	6"	1	1



Fig. 300

ART. 636

Calotta esagonale.

Galvanised cast iron female cap.

codice code	Ø	conf./pack	
		⌘	⊞
1023306	1/4"	20	1000
1023307	3/8"	30	800
1023308	1/2"	100	800
1023309	3/4"	50	400
1023310	1"	20	250
1023311	1 1/4"	10	100
1023312	1 1/2"	10	90
1023313	2"	5	70
1023314	2 1/2"	2	40
1023315	3"	2	25
1023317	4"	1	18



Fig. 310

ART. 638

Controdado.

Galvanised cast iron flat lock nut.

codice code	Ø	conf./pack	
		⌘	⊞
1023508	1/2"	100	600
1023509	3/4"	100	500
1023510	1"	50	300
1023511	1 1/4"	20	200
1023512	1 1/2"	10	150
1023513	2"	10	100



Fig. 330

ART. 640

Bocchettone FF a sede piana diritto.

Galvanised cast iron FF flat pipe union.

codice code	Ø	conf./pack	
		⌘	⊞
1023908	1/2"	20	120
1023909	3/4"	20	80
1023910	1"	20	60
1023911	1 1/4"	10	40
1023912	1 1/2"	10	30
1023913	2"	5	20
1023914	2 1/2"	2	10
1023915	3"	1	6
1023917	4"	1	3



Fig. 331

ART. 642

Bocchettone M.F a sede piana diritto.

Galvanised cast iron M.F flat pipe union.

codice code	Ø	conf./pack	
		⌘	⊞
1024007	3/8"	20	100
1024008	1/2"	20	100
1024009	3/4"	20	60
1024010	1"	01	40
1024011	1 1/4"	10	30
1024012	1 1/2"	5	20
1024013	2"	2	15
1024014	2 1/2"	2	10
1024015	3"	1	3



Fig. 340

ART. 644

Bocchettone FF a sede conica diritto.

Galvanised cast iron FF conic pipe union.

codice code	Ø	conf./pack	
		⌘	⊞
1024106	1/4"	20	200
1024107	3/8"	30	150
1024108	1/2"	100	120
1024109	3/4"	50	80
1024110	1"	20	60
1024111	1 1/4"	10	40
1024112	1 1/2"	10	30
1024113	2"	5	20
1024114	2 1/2"	2	10
1024115	3"	2	6
1024117	4"	1	3
1024119	5"	1	1
1024121	6"	1	1



Fig. 341

ART. 646

Bocchettone M.F. a sede conica diritto.
Galvanized cast iron M.F. conic pipe union.

codice code	∅	conf./pack	
		⊗	⊠
1024206	1/4"	10	190
1024207	3/8"	20	140
1024208	1/2"	30	100
1024209	3/4"	20	60
1024210	1"	10	40
1024211	1 1/4"	10	30
1024212	1 1/2"	10	20
1024213	2"	5	15
1024214	2 1/2"	2	10
1024215	3"	1	3
1024217	4"	1	2



Fig. 529/A

ART. 648

Manicotto M.F.
Galvanized cast iron M.F. coupling.

codice code	∅	conf./pack	
		⊗	⊠
1024407	3/8"	30	400
1024408	1/2"	50	360
1024409	3/4"	20	220
1024410	1"	10	120
1024411	1 1/4"	5	80
1024412	1 1/2"	5	60
1024413	2"	5	30



Fig. 531

ART. 650

Niplo semplice.
Galvanized cast iron nipple.

codice code	∅	conf./pack	
		⊗	⊠
1024508	1/2"	20	100
1024509	3/4"	10	100
1024510	1"	10	100
1024511	1 1/4"	5	70
1024512	1 1/2"	5	50
1024513	2"	5	40



Fig. 90 R

ART. 652

Gomito 90° ridotto F.F.
Galvanized cast iron reducing elbow joint.

codice code	∅	conf./pack	
		⊗	⊠
1020805	1/2"x1/4"	50	300
1020806	1/2"x3/8"	50	300
1020809	3/4"x3/8"	30	160
1020810	3/4"x1/2"	30	160
1020813	1"x1/2"	20	110
1020814	1"x3/4"	20	100
1020816	1 1/4"x1/2"	10	80
1020817	1 1/4"x3/4"	10	70
1020818	1 1/4"x1"	10	60
1020822	1 1/2"x1"	5	40
1020823	1 1/2"x1 1/4"	5	40
1020827	2"x1"	2	30
1020828	2"x1 1/4"	2	30
1020829	2"x1 1/2"	2	30



Fig. 130 R

ART. 654

Tee a 90° ridotto.
Galvanized cast iron TEE reducing pipe fitting.

codice code	∅	conf./pack	
		⊗	⊠
1021707	1/2"x3/8"x3/8"	50	150
1021708	1/2"x3/8"x1/2"	50	150
1021709	1/2"x1/2"x3/8"	50	150
1021710	1/2"x3/4"x1/2"	30	120
1021719	3/4"x1/2"x1/2"	30	120
1021720	3/4"x1/2"x3/4"	30	120
1021722	3/4"x3/4"x1/2"	30	120
1021724	3/4"x1x3/4"	20	60
1021730	1x1/2x1/2"	20	60
1021731	1x1/2x3/4"	20	60
1021732	1x1/2x1"	20	60
1021733	1x3/4x1/2"	20	60
1021734	1x3/4x3/4"	20	60
1021735	1x3/4x1"	20	60
1021736	1x1x1/2"	20	60
1021737	1x1x3/4"	20	60
1021738	1x1 1/4x1"	10	30
1021745	1 1/4x1 1/2x1 1/4"	10	40
1021746	1 1/4x3/4x3/4"	10	40
1021748	1 1/4x3/4x1 1/4"	10	40
1021751	1 1/4x1x1"	10	30
1021752	1 1/4x1x1 1/4"	10	30
1021753	1 1/4x1 1/4x1/2"	10	40
1021754	1 1/4x1 1/4x3/4"	10	30
1021755	1 1/4x1 1/4x1"	10	30
1021756	1 1/4x1 1/2x1 1/4"	10	30
1021761	1 1/2x1 1/2x1 1/2"	10	30
1021765	1 1/2x3/4x1 1/2"	10	30
1021766	1 1/2x1 1/2x1"	10	30
1021768	1 1/2x1x1 1/2"	10	30
1021771	1 1/2x1 1/4x1 1/2"	10	25
1021772	1 1/2x1 1/2x1/2"	10	25
1021773	1 1/2x1 1/2x3/4"	10	25
1021774	1 1/2x1 1/2x1"	10	25
1021775	1 1/2x1 1/2x1 1/4"	10	25
1021780	2x1/2x2"	5	20
1021782	2x3/4x2"	5	20
1021786	2x1x2"	5	20
1021789	2x1 1/4x2"	5	15
1021793	2x1 1/2x2"	5	15
1021795	2x2x3/4"	5	15
1021796	2x2x1"	5	15
1021797	2x2x1 1/4"	5	15
1021808	2 1/2x1 1/4x2 1/2"	2	8
1021811	2 1/2x1 1/2x2 1/2"	2	8
1021815	2 1/2x2x2 1/2"	2	8
1021828	3x1 1/2x3"	1	6
1021832	3x2x3"	1	6
1021833	3x2 1/2x3"	1	6
1021844	4"x2"x4"	1	3
1021843	4"x2"1/2"x4"	1	3
1021848	4"x3"x4"	1	3



Fig. 240

ART. 656

Manicotto di riduzione.
Galvanized cast iron coupling.

codice code	∅	conf./pack	
		⊗	⊠
1022405	1/2"x1/4"	50	320
1022406	1/2"x3/8"	50	320
1022409	3/4"x3/8"	30	240
1022410	3/4"x1/2"	30	240
1022412	1"x3/8"	20	160
1022413	1"x1/2"	20	160
1022414	1"x3/4"	20	160
1022416	1 1/4x1/2"	10	90
1022417	1 1/4x3/4"	10	90
1022418	1 1/4x1"	10	90
1022420	1 1/2x1/2"	5	80
1022421	1 1/2x3/4"	5	70
1022422	1 1/2x1"	5	60
1022423	1 1/2x1 1/4"	5	50
1022426	2"x3/4"	2	50
1022427	2"x1"	2	50
1022428	2"x1 1/4"	2	40
1022429	2"x1 1/2"	2	40

ART. 658

Riduzione M.F.

Galvanised cast iron reducer



Fig. 241

codice code	Ø	conf./pack	
		🔑	📦
1022503	3/8"x1/4"	50	800
1022505	1/2"x1/4"	100	800
1022506	1/2"x3/8"	100	800
1022508	3/4"x1/4"	50	480
1022509	3/4"x3/8"	50	480
1022510	3/4"x1/2"	50	480
1022511	1"x1/4"	30	260
1022512	1"x3/8"	30	260
1022513	1"x1/2"	30	260
1022514	1"x3/4"	30	260
1022515	1"x1/4x3/8"	20	160
1022516	1"x1/4x1/2"	20	160
1022517	1"x1/4x3/4"	20	160
1022518	1"x1/4x1"	20	120
1022520	1"x1/2x1/2"	20	120
1022521	1"x1/2x3/4"	20	120
1022522	1"x1/2x1"	20	120
1022523	1"x1/2x1"x1/4"	20	120
1022525	2"x1/2"	10	60
1022526	2"x3/4"	10	60
1022527	2"x1"	10	60
1022528	2"x1"x1/4"	10	60
1022529	2"x1"x1/2"	10	60
1022532	2"x1/2x1"	5	40
1022533	2"x1/2x1"x1/4"	5	40
1022534	2"x1/2x1"x1/2"	5	40
1022535	2"x1/2x2"	5	40
1022538	3"x1"	2	30
1022539	3"x1"x1/4"	2	30
1022540	3"x1"x1/2"	2	30
1022541	3"x2"	2	30
1022542	3"x2"x1/2"	2	30
1022543	4"x1"	1	18
1022544	4"x1"x1/4"	1	18
1022545	4"x1"x1/2"	1	18
1022546	4"x2"	1	18
1022547	4"x2"x1/2"	1	18
1022548	4"x3"	1	10
1022551	5"x4"	1	1
1022552	6"x3"	1	1
1022555	6"x4"	1	1
1022554	6"x5"	1	1

ART. 662

Manicotto F.M. di riduzione.

Galvanised cast iron reducing coupling



Fig. 246

codice code	Ø	conf./pack	
		🔑	📦
1022705	1/2"x1/4"	50	380
1022706	1/2"x3/8"	50	380
1022709	3/4"x3/8"	30	380
1022710	3/4"x1/2"	30	220
1022713	1"x1/2"	20	120
1022714	1"x3/4"	20	120
1022716	1"x1/4x1/2"	10	80
1022717	1"x1/4x3/4"	10	80
1022718	1"x1/4x1"	10	80
1022721	1"x1/2x3/4"	5	60
1022722	1"x1/2x1"	5	60
1022723	1"x1/2x1"x1/4"	5	60
1022727	2"x1"	2	30
1022728	2"x1"x1/4"	2	30
1022729	2"x1"x1/2"	2	30

ART. 660

Nipplo ridotto.

Galvanised cast iron reducing nipple



Fig. 245

codice code	Ø	conf./pack	
		🔑	📦
1022606	1/2"x3/8"	50	350
1022609	3/4"x3/8"	30	250
1022610	3/4"x1/2"	30	250
1022613	1"x1/2"	20	130
1022614	1"x3/4"	20	130
1022616	1"x1/4x1/2"	10	70
1022617	1"x1/4x3/4"	10	70
1022618	1"x1/4x1"	10	70
1022621	1"x1/2x3/4"	10	60
1022622	1"x1/2x1"	10	60
1022623	1"x1/2x1"x1/4"	10	60
1022626	2"x1"	5	30
1022628	2"x1"x1/4"	5	30
1022629	2"x1"x1/2"	5	30
1022634	2"x1/2x1"x1/2"	2	24
1022635	2"x1/2x2"	2	24

RACCORDI IN GHISA MALLEABILE "CUORE BIANCO" UNI10242:1994



Fig. 90

ART. 800

Gomito 90° F.F.
Galvanized cast iron 90° FF elbow joint.

codice code	Ø	conf./pack	
		⊗	⊗
CB20707	3/8"	10	250
CB20708	1/2"	10	120
CB20709	3/4"	10	90
CB20710	1"	10	50
CB20711	1 1/4"	5	30
CB20712	1 1/2"	5	22
CB20713	2"	5	12
CB20714	2 1/2"	1	7
CB20715	3"	1	4
CB20717	4"	1	2



Fig. 92

ART. 802

Gomito 90° M.F.
Galvanized cast iron 90° MF elbow joint.

codice code	Ø	conf./pack	
		⊗	⊗
CB20907	3/8"	10	250
CB20908	1/2"	10	150
CB20909	3/4"	10	90
CB20910	1"	10	50
CB20911	1 1/4"	5	30
CB20912	1 1/2"	5	22
CB20913	2"	5	12
CB20914	2 1/2"	1	7
CB20915	3"	1	4
CB20917	4"	1	2



Fig. 96

ART. 804

Gomito a 90° F.F. con bocchettone a sede conica.
Galvanized cast iron conic seat FF bent pipe union.

codice code	Ø	conf./pack	
		⊗	⊗
CB21108	1/2"	10	50
CB21109	3/4"	10	40
CB21110	1"	5	28
CB21113	2"	1	6



Fig. 98

ART. 806

Gomito a 90° M.F. con bocchettone a sede conica.
Galvanized cast iron conic seat M.F. bent pipe union.

codice code	Ø	conf./pack	
		⊗	⊗
CB21308	1/2"	10	50
CB21309	3/4"	10	30
CB21310	1"	5	23
CB21313	2"	1	6



Fig. 130

ART. 808

Tee a 90° F.F.
Galvanized cast iron tee.

codice code	Ø	conf./pack	
		⊗	⊗
CB21606	1/4"	10	220
CB21607	3/8"	10	120
CB21608	1/2"	10	70
CB21609	3/4"	10	60
CB21610	1"	10	30
CB21611	1 1/4"	5	20
CB21612	1 1/2"	5	14
CB21613	2"	5	10
CB21614	2 1/2"	1	5
CB21615	3"	1	4
CB21617	4"	1	2



Fig. 180

ART. 810

Croce a 90°.
Galvanized cast iron cross.

codice code	Ø	conf./pack	
		⊗	⊗
CB22108	1/2"	10	70
CB22109	3/4"	10	40
CB22110	1"	10	28
CB22111	1 1/4"	5	16
CB22112	1 1/2"	5	10
CB22113	2"	5	7



Fig. 270

ART. 812

Manicotto.
Galvanized cast iron coupling.

codice code	Ø	conf./pack	
		⊗	⊗
CB22806	1/4"	10	400
CB22807	3/8"	10	250
CB22808	1/2"	10	180
CB22809	3/4"	10	110
CB22810	1"	10	80
CB22811	1 1/4"	5	45
CB22812	1 1/2"	5	35
CB22813	2"	5	20
CB22814	2 1/2"	1	12
CB22815	3"	1	9
CB22817	4"	1	4



Fig. 280

ART. 814

Nipples doppio.
Galvanized cast iron nipples.

codice code	Ø	conf./pack	
		⊗	⊗
CB23007	3/8"	10	300
CB23008	1/2"	10	200
CB23009	3/4"	10	130
CB23010	1"	10	80
CB23011	1 1/4"	10	40
CB23012	1 1/2"	5	40
CB23013	2"	5	20
CB23014	2 1/2"	1	10
CB23015	3"	1	8
CB23017	4"	1	4



Fig. 290

ART. 816

Tappo maschio con bordo.
Galvanized cast iron male cap.

codice code	Ø	conf./pack	
		⊗	⊗
CB23207	3/8"	10	400
CB23208	1/2"	10	300
CB23209	3/4"	10	200
CB23210	1"	10	120
CB23211	1 1/4"	10	80
CB23212	1 1/2"	10	60
CB23213	2"	5	40
CB23214	2 1/2"	1	20
CB23215	3"	1	15
CB23217	4"	1	8



Fig. 340

ART. 818

Bocchettone F.F. a sede conica diritto.
Galvanized cast iron FF conic pipe union

codice code	Ø	conf./pack	
		⊗	⊗
CB24108	1/2"	10	80
CB24109	3/4"	10	50
CB24110	1"	10	30
CB24111	1 1/4"	5	20
CB24112	1 1/2"	5	18
CB24113	2"	5	10



Fig. 341

ART. 820

Bocchettone M.F. a sede conica diritto.
Galvanised cast iron MF conic pipe union.

codice code	Ø	conf./pack	
		⊗	⊠
CB24208	1/2"	10	60
CB24209	3/4"	10	40
CB24210	1"	5	35
CB24211	1 1/4"	5	18
CB24212	1 1/2"	5	15
CB24213	2"	5	10



Fig. 240

ART. 826

Manicotto di riduzione.
Galvanised cast iron coupling.

codice code	Ø	conf./pack	
		⊗	⊠
CB22406	1/2"x3/8"	10	200
CB22409	3/4"x3/8"	10	140
CB22410	3/4"x1/2"	10	140
CB22412	1"x3/8"	10	100
CB22413	1"x1/2"	10	90
CB22414	1"x3/4"	10	80
CB22416	1 1/4x1/2"	10	60
CB22417	1 1/4x3/4"	10	60
CB22418	1 1/4x1"	10	50
CB22422	1 1/2x1"	5	45
CB22423	1 1/2x1 1/4"	5	40
CB22426	2"x3/4"	5	30
CB22427	2"x1"	5	25
CB22428	2"x1 1/4"	5	22
CB22429	2"x1 1/2"	5	22



Fig. 90 R

ART. 822

Gomito 90° ridotto F.F.
Galvanised cast iron reducing elbow joint.

codice code	Ø	conf./pack	
		⊗	⊠
CB20810	3/4"x1/2"	10	90
CB20813	1"x1/2"	10	50
CB20814	1"x3/4"	10	50
CB20816	1 1/4x1/2"	10	50
CB20817	1 1/4x3/4"	10	50
CB20818	1 1/4x1"	1	40
CB20822	1 1/2x1"	1	35
CB20823	1 1/2x1 1/4"	1	25
CB20829	2"x1 1/2"	1	15



Fig. 241

ART. 828

Riduzione M.F.
Galvanised cast iron reducer.

codice code	Ø	conf./pack	
		⊗	⊠
CB22505	1/2"x1/4"	10	350
CB22506	1/2"x3/8"	10	350
CB22509	3/4"x3/8"	10	200
CB22510	3/4"x1/2"	10	200
CB22513	1"x1/2"	10	140
CB22514	1"x3/4"	10	140
CB22516	1 1/4x1/2"	10	80
CB22517	1 1/4x3/4"	10	80
CB22518	1 1/4x1"	10	80
CB22520	1 1/2x1/2"	10	70
CB22521	1 1/2x3/4"	10	70
CB22522	1 1/2x1"	10	70
CB22523	1 1/2x1 1/4"	10	70
CB22527	2"x1"	5	30
CB22529	2"x1 1/2"	5	30
CB22535	2 1/2x2"	1	20
CB22541	3"x2"	1	15



Fig. 130 R

ART. 824

Tee a 90° ridotto.
Galvanised cast iron TEE reducing pipe fitting.

codice code	Ø	conf./pack	
		⊗	⊠
CB21710	1/2x3/4x1/2	10	70
CB21720	3/4x1/2x3/4	10	60
CB21732	1"x1/2"x1"	10	40
CB21735	1"x3/4"x1"	10	40
CB21737	1"x1"x3/4"	10	30
CB21745	1 1/4x1/2x1 1/4	1	30
CB21748	1 1/4x3/4x1 1/4	1	30
CB21752	1 1/4x1x1 1/4	1	25
CB21761	1 1/2x1/2x1 1/2	1	25
CB21765	1 1/2x3/4x1 1/2	1	22
CB21768	1 1/2x1x1 1/2	1	20
CB21771	1 1/2x1 1/4x1 1/2	1	17
CB21780	2"x1/2"x2"	1	15
CB21782	2"x3/4"x2"	1	15
CB21786	2"x1"x2"	1	12
CB21789	2"x1"x1 1/4x2"	1	12
CB21793	2"x1"x1 1/2x2"	1	10
CB21808	2 1/2x1 1/4x2 1/2	1	8
CB21811	2 1/2x1 1/2x2 1/2	1	8
CB21815	2 1/2x2 1/2x2 1/2	1	6
CB21828	3"x1"x1 1/2x3"	1	4
CB21832	3x2x3	1	4
CB21833	3"x2"x1 1/2x3"	1	3
CB21844	4"x2"x4"	1	2
CB21843	4"x2"x4"	1	2
CB21848	4"x3"x4"	1	2



Fig. 245

ART. 830

Nipplo ridotto.
Galvanised cast iron reducing nipple.

codice code	Ø	conf./pack	
		⊗	⊠
CB22606	1/2"x3/8"	10	230
CB22610	3/4"x1/2"	10	150
CB22613	1"x1/2"	10	100
CB22614	1"x3/4"	10	100
CB22618	1 1/4x1"	10	50
CB22622	1 1/2x1"	5	50
CB22623	1 1/2x1 1/4"	5	45
CB22629	2"x1 1/2"	5	25

RACCORDI IN ACCIAIO ZINCATO

ART. 5700

Prolunga in acciaio zincato tipo pesante con quadro.
Heavy galvanised steel extension with square.



codice code	cm x Ø	conf. pack
1165307	1x3/8"	10
1165308	1x1/2"	10
1165309	1x3/4"	10
1165357	1,5x3/8"	10
1165358	1,5x1/2"	10
1165359	1,5x3/4"	10
1165407	2x3/8"	10
1165408	2x1/2"	10
1165409	2x3/4"	10
1165507	3x3/8"	10
1165508	3x1/2"	10
1165509	3x3/4"	10

ART. 5702

Riduzione in acciaio zincato MF cm. 1,5.
MF cm. 1,5 galvanised steel reducer.



codice code	Ø	conf. pack
1165803	1/4"x3/8"	10
1165806	3/8"x1/2"	10
1165810	1/2"x3/4"	10
1165814	3/4"x1"	10

ART. 5704

Manicotto ridotto in acciaio zincato FF.
FF galvanised steel reducing coupling.



codice code	Ø	conf. pack
1166003	3/8"x1/4"	10
1166005	1/2"x1/4"	10
1166006	1/2"x3/8"	10
1166010	3/4"x1/2"	10
1166014	1"x3/4"	10
1166018	1"1/4x1"	10

ART. 5706

Nipples in acciaio zincato tutto filettato.
Threaded galvanised steel nipples.



codice code	Ø	conf. pack
1166406	1/4"	10
1166407	3/8"	10
1166408	1/2"	10
1166409	3/4"	10
1166410	1"	10
1166411	1"1/4	10
1166412	1"1/2	10
1166413	2"	10

ART. 5708

Tappo M in acciaio zincato.
Galvanised steel male cap.



codice code	Ø	conf. pack
1166606	1/4"	10
1166607	3/8"	10
1166608	1/2"	10
1166609	3/4"	10
1166610	1"	10

ART. 5710

Tappo F in acciaio zincato.
Galvanised steel female cap.



codice code	Ø	conf. pack
1166806	1/4"	10
1166807	3/8"	10
1166808	1/2"	10
1166809	3/4"	10
1166810	1"	10

ART. 5712

Riduzione ridotta MF in acciaio zincato.
MF galvanised steel small-sized reducer.



codice code	Ø	conf. pack
1166203	3/8"x1/4"	10
1166205	1/2"x1/4"	10
1166206	1/2"x3/8"	10
1166210	3/4"x1/2"	10
1166213	1"x1/2"	10
1166214	1"x3/4"	10

ART. 5714

Nipples di riduzione in acciaio zincato.
Galvanised steel reduction nipples.



codice code	Ø	conf. pack
1167006	3/8"x1/4"	10
1167009	1/2"x1/4"	10
1167010	1/2"x3/8"	10
1167014	3/4"x1/2"	10
1167016	1"x3/4"	10
1167018	1"1/4x1"	10

ART. 5716

Nipples doppia vite in acciaio zincato.
Galvanised steel double screw reducer.



codice code	Ø	conf. pack
1167206	1/4"	10
1167207	3/8"	10
1167208	1/2"	10
1167209	3/4"	10
1167210	1"	10

ART. 5718

Controdado in acciaio zincato.
Galvanised steel lock nut.



codice code	Ø	conf. pack
1167406	1/4"	10
1167407	3/8"	10
1167408	1/2"	10
1167409	3/4"	10
1167410	1"	10

ART. 5720

Tappo maschio con quadro in acciaio zincato.
Galvanised steel male plug with squared nut.



codice code	Ø	conf. pack
1166676	1/4"	10
1166677	3/8"	10
1166678	1/2"	10
1166679	3/4"	10
1166680	1"	10



NERO

ART. 5750

Manicotto in acciaio nero.
Black steel coupling.

codice code	Ø	conf. pack
1161806	1/4"	10
1161807	3/8"	10
1161808	1/2"	50
1161809	3/4"	10
1161810	1"	10
1161811	1 1/4"	5
1161812	1 1/2"	5
1161813	2"	5
1161814	2 1/2"	2
1161815	3"	2
1161817	4"	2



ZINCATO

ART. 5752

Manicotto in acciaio zincato
Galvanized steel coupling.

codice code	Ø	conf. pack
1161906	1/4"	10
1161907	3/8"	10
1161908	1/2"	50
1161909	3/4"	10
1161910	1"	10
1161911	1 1/4"	5
1161912	1 1/2"	5
1161913	2"	2
1161914	2 1/2"	2
1161915	3"	2
1161917	4"	2



NERO

ART. 5754

Mezzo manicotto in acciaio nero.
Black half-coupling.

codice code	Ø	conf. pack
1162006	1/4"	10
1162007	3/8"	10
1162008	1/2"	50
1162009	3/4"	10
1162010	1"	10
1162011	1 1/4"	5
1162012	1 1/2"	5
1162013	2"	2
1162014	2 1/2"	2
1162015	3"	2
1162017	4"	2



ART. 5756

Fondello bombato in ferro.
Cap.

codice code	Ø	DN	conf. pack
1161410	1"	33	10
1161411	1 1/4"	42	10
1161412	1 1/2"	48	10
1161413	2"	60	10
1161414	2 1/2"	76	10
1161415	3"	88	10
1161416	3 1/2"	101	10
1161417	4"	114	5
1161418	4 1/2"	133	5
1161419	5"	139	2
1161421	6"	168	2



ART. 5758

Curva a saldare Dima 3D 90° DIN 2605.
Welded elbow 3D 90°

codice code	Ø	DE	conf. pack
1161002	1/2"	21,6	20
1161003	3/4"	26,9	20
1161004	-	30	20
1161005	1"	33,7	20
1161006	-	38	20
1161007	1 1/4"	42,4	20
1161009	1 1/2"	48,3	20
1161011	-	54	20
1161013	2"	60,3	20
1161014	-	70	2
1161016	2 1/2"	76,1	2
1161018	3"	88,9	2
1161019	-	101	2
1161020	-	108	2
1161021	4"	114,3	2
1161022	4 1/2"	133	2
1161023	5"	139,7	1
1161025	6"	168,3	1
1161026	-	193,7	1
1161027	8"	219,1	1
1161030	10"	273	1
1161033	12"	323,9	1



ART. 5760

Riduzione concentrica a norme
DIN 2616.

Concentric reducers which are manufactured according DIN 2616 regulations.

codice code		conf. pack
1160502	42x33	5
1160505	48x33	5
1160509	60x33	5
1160508	60x42	5
1160507	60x48	5
1160516	76x48	2
1160515	76x60	2
1160521	88x48	2
1160520	88x60	2
1160518	88x76	2
1160534	114x60	2
1160532	114x76	2
1160531	114x88	2
1160539	133x76	1
1160538	133x88	1
1160546	139x76	1
1160545	139x88	1
1160542	139x114	1



ART. 5762

Raccordo a T normale DIN 2615.
Normal T-shaped pipe-fittings which are manufactured according DIN 2615 regulations.

codice code	Ø	DE	conf. pack
1164008	1/2"	21,3	5
1164009	3/4"	26,9	5
1164010	1"	33,7	2
1164011	1 1/4"	42,4	2
1164012	1 1/2"	48,3	2
1164013	2"	60,3	2
1164014	2 1/2"	76,1	1
1164015	3"	88,9	1
1164017	4"	114,3	1
1164019	5"	139,7	1
1164021	6"	168,3	1
1164023	8"	219,1	1



BARILOTTI

ART. 850

Viti di prolungamento 2 filetti in acciaio zincato.

Galvanised steel two thread expansion bolt.

codice code	Ø	conf./pack ⊗
1164903	cm.4x1/2"	10
1164908	cm.5x1/2"	10
1165008	cm.6x1/2"	10
1165058	cm.7x1/2"	10
1165108	cm.8x1/2"	10
1165118	cm.9x1/2"	10
1165208	cm.10x1/2"	10
1165128	cm.11x1/2"	10
1165218	cm.12x1/2"	10
1165222	cm.13x1/2"	10
1165257	cm.14x1/2"	10
1165258	cm.15x1/2"	10
1165275	cm.16x1/2"	10
1165276	cm.17x1/2"	10
1165280	cm.18x1/2"	10
1165277	cm.19x1/2"	10
1165281	cm.20x1/2"	10
1165226	cm.21x1/2"	10
1164949	cm.22x1/2"	10
1164816	cm.23x1/2"	10
1164817	cm.24x1/2"	10
1165286	cm.25x1/2"	10
1165300	cm.26x1/2"	10
1165301	cm.27x1/2"	10
1165302	cm.28x1/2"	10
1164820	cm.29x1/2"	10
1165290	cm.30x1/2"	10
1164859	cm.50x1/2"	5
1164508	cm.100x1/2"	5
1164528	cm.150x1/2"	5
1164904	cm.4x3/4"	10
1164909	cm.5x3/4"	10
1165009	cm.6x3/4"	10
1165059	cm.7x3/4"	10
1165109	cm.8x3/4"	10
1165119	cm.9x3/4"	10
1165209	cm.10x3/4"	10
1165129	cm.11x3/4"	10
1165219	cm.12x3/4"	10
1165233	cm.13x3/4"	10
1165223	cm.14x3/4"	10
1165259	cm.15x3/4"	10
1165234	cm.16x3/4"	10
1165225	cm.17x3/4"	10
1165235	cm.18x3/4"	10
1165227	cm.19x3/4"	10
1165282	cm.20x3/4"	10
1165228	cm.21x3/4"	10
1164950	cm.22x3/4"	10
1164951	cm.23x3/4"	10
1164952	cm.24x3/4"	10
1164953	cm.25x3/4"	10
1165236	cm.26x3/4"	10
1164954	cm.27x3/4"	10
1165237	cm.28x3/4"	10
1165229	cm.29x3/4"	10
1165291	cm.30x3/4"	10
1164858	cm.50x3/4"	5
1164509	cm.100x3/4"	5
1164529	cm.150x3/4"	5
1164905	cm.4x1"	10
1164910	cm.5x1"	10
1165010	cm.6x1"	10
1165060	cm.7x1"	10
1165110	cm.8x1"	10
1165120	cm.9x1"	10
1165210	cm.10x1"	10
1165130	cm.11x1"	10
1165220	cm.12x1"	10
1165254	cm.13x1"	10
1164958	cm.14x1"	10
1165260	cm.15x1"	10



BARILOTTI

ART. 850

Viti di prolungamento 2 filetti in acciaio zincato.

Galvanised steel two thread expansion bolt.

codice code	Ø	conf./pack ⊗
1164959	cm.16x1"	10
1164960	cm.17x1"	10
1165256	cm.18x1"	10
1164961	cm.19x1"	10
1165283	cm.20x1"	10
1164962	cm.21x1"	10
1165279	cm.22x1"	10
1164963	cm.23x1"	10
1164964	cm.24x1"	10
1165288	cm.25x1"	10
1165241	cm.26x1"	10
1165242	cm.27x1"	10
1165274	cm.28x1"	10
1165243	cm.29x1"	10
1165292	cm.30x1"	10
1164860	cm.50x1"	5
1164510	cm.100x1"	5
1164530	cm.150x1"	5
1164906	cm.4x1 1/4"	10
1164911	cm.5x1 1/4"	10
1165020	cm.6x1 1/4"	10
1165061	cm.7x1 1/4"	10
1165111	cm.8x1 1/4"	10
1165121	cm.9x1 1/4"	10
1165211	cm.10x1 1/4"	10
1165131	cm.11x1 1/4"	10
1165221	cm.12x1 1/4"	10
1165151	cm.13x1 1/4"	10
1165161	cm.14x1 1/4"	10
1165266	cm.15x1 1/4"	10
1164801	cm.16x1 1/4"	10
1164802	cm.17x1 1/4"	10
1165181	cm.18x1 1/4"	10
1164803	cm.19x1 1/4"	10
1165183	cm.20x1 1/4"	10
1165190	cm.30x1 1/4"	10

Altri tipi e misure a richiesta.
Other size are available upon demande.

ART. 852

Tronchetto nero filettato.

Black trunks.



TRONCHETTI

codice code	Ø	conf./pack ⊗
1160207	10x3/8"	10
1160307	15x3/8"	10
1160208	10x1/2"	10
1160308	15x1/2"	10
1160209	10x3/4"	10
1160309	15x3/4"	10
1160210	10x1"	10
1160310	15x1"	10
1160211	10x1 1/4"	5
1160311	15x1 1/4"	5
1160212	10x1 1/2"	5
1160312	15x1 1/2"	5
1160213	10x2"	5
1160313	15x2"	5
1160214	10x2 1/2"	5
1160314	15x2 1/2"	5
1160215	10x3"	2
1160315	15x3"	2
1160217	10x4"	2
1160317	15x4"	2



ART. 5800

Flange in ferro piano PN 10/16
UNI 2277/2278, EN 1092-1/11.

*PN 10/16 flat iron flanges which
are manufactured according to UNI
2277/2278 UNI 1092-11 regulations.*

codice code	Ø	DN	fori	conf. pack
1141202	1"	25	4	4
1141203	1 1/4"	32	4	4
1141204	1 1/2"	40	4	4
1141205	2"	50	4	4
1141206	2 1/2"	65	8	4
1141268	3"	80	8	4
1141210	4"	100	8	4
1141212	5"	125	8	2
1141215	6"	150	8	2
1141220	8"	200	8	2
1141221	8"	200	12	2



ART. 5802

Flange in ferro a collarino PN 10/16
UNI 2281/2282, EN 1092-1/11.

*PN 10/16 collar iron flanges which are
manufactured according to UNI 2281/2282,
EN 1092-1/11 regulations.*

codice code	Ø	DN	fori	conf. pack
1142202	1"	25	4	4
1142203	1 1/4"	32	4	4
1142204	1 1/2"	40	4	4
1142205	2"	50	4	4
1142206	2 1/2"	65	8	4
1142268	3"	80	8	4
1142210	4"	100	8	4
1142212	5"	125	8	2
1142215	6"	150	8	2
1142220	8"	200	8	2
1142221	8"	200	12	2



ART. 5804

Flange in ferro filettate a collarino
PN 10/16 UNI 2254, EN 1092-1/13.

*PN 10/16 collar threaded iron flanges
which are manufactured according to UNI
2254, EN 1092-1/13 regulations.*

codice code	Ø	DN	fori	conf. pack
1142602	1"	25	4	4
1142603	1 1/4"	32	4	4
1142604	1 1/2"	40	4	4
1142605	2"	50	4	4
1142606	2 1/2"	65	8	4
1142668	3"	80	8	4
1142610	4"	100	8	4
1142612	5"	125	8	2
1142615	6"	150	8	2



ART. 5810

Bulloni per flange.

Flange bolts.

codice code	Ø	PER FLANGE	conf. pack
1146002	12x50	32-50	20
1146004	16x60	65-80	20
1146006	16x65	oltre	20



ESENTE AMIANTO

ART. 5812

Guarnizioni per flange PN 10 - PN 16
essente amianto spessore mm 2 a norma.
PN 10 - PN 16 mm. 2 thick flange rings
without asbestos.

codice code	DN	mm	conf. pack
1145101	20	60x25	100
1145102	25	70x30	100
1145103	32	82x42	100
1145104	40	92x49	100
1145105	50	107x57	100
1145106	65	127x76	50
1145108	80	142x89	50
1145110	100	162x108	50
1145112	125	192x133	20
1145115	150	218x159	10
1145120	200	273x200	10



IN GOMMA TELA

ART. 5814

Guarnizioni per flange in gomma
tela spessore mm. 3.
mm. 3 thick rubberised canvas flange rings.

codice code	DN	mm	conf. pack
1145201	20	60x25	100
1145202	25	70x30	100
1145203	32	82x42	100
1145204	40	92x49	100
1145205	50	107x57	100
1145206	65	127x76	50
1145208	80	142x89	50
1145210	100	162x108	50
1145212	125	192x133	20
1145215	150	218x159	10
1145220	200	273x200	10

RACCORDI IN OTTONE A STRINGERE

ART. 5600

Raccordo maschio ottone con tenuta O-Ring.
O-Ring seal brass male pipe fitting.



codice code	∅	conf. pack
1260206	3/8"x10	10
1260207	3/8"x12	10
1260212	1/2"x10	10
1260213	1/2"x12	10
1260214	1/2"x14	10
1260215	1/2"x16	10
1260221	3/4"x18	10
1260222	3/4"x22	10
1260225	1"x28	10

ART. 5602

Raccordo femmina ottone con tenuta O-Ring.
O-Ring seal female pipe fitting.



codice code	∅	conf. pack
1260406	3/8"x10	10
1260407	3/8"x12	10
1260412	1/2"x10	10
1260413	1/2"x12	10
1260414	1/2"x14	10
1260415	1/2"x16	10
1260421	3/4"x18	10
1260422	3/4"x22	10
1260425	1"x28	10

ART. 5604

Manicotto ottone con tenuta O-Ring.
O-Ring seal brass coupling.



codice code	∅	conf. pack
1260610	10	10
1260612	12	10
1260614	14	10
1260616	16	10
1260618	18	10
1260622	22	10
1260628	28	10

ART. 5606

Gomito maschio ottone con tenuta O-Ring.
O-Ring seal brass male elbow joint.



codice code	∅	conf. pack
1261006	3/8"x10	10
1261007	3/8"x12	10
1261012	1/2"x10	10
1261013	1/2"x12	10
1261014	1/2"x14	10
1261015	1/2"x16	10
1261021	3/4"x18	10
1261022	3/4"x22	10
1261028	1"x28	10

ART. 5608

Gomito F ottone con tenuta O-Ring.
O-Ring seal brass F elbow joint.



codice code	∅	conf. pack
1261206	3/8"x10	10
1261207	3/8"x12	10
1261212	1/2"x10	10
1261213	1/2"x12	10
1261214	1/2"x14	10
1261215	1/2"x16	10
1261221	3/4"x18	10
1261222	3/4"x22	10
1261225	1"x28	10

ART. 5610

Gomito ottone con tenuta O-Ring.
O-Ring seal brass elbow joint.



codice code	∅	conf. pack
1261410	10x10	10
1261412	12x12	10
1261414	14x14	10
1261416	16x16	10
1261418	18x18	10
1261422	22x22	10
1261428	28x28	10

ART. 5612

Raccordo a TEE ottone con tenuta O-Ring.
O-Ring seal brass TEE pipe fitting.



codice code	∅	conf. pack
1260810	10	10
1260812	12	10
1260814	14	10
1260816	16	10
1260818	18	10
1260822	22	10
1260828	28	10

ART. 5614

Raccordo a TEE ottone con tenuta O-Ring.
O-Ring seal brass TEE pipe fitting.



codice code	∅	conf. pack
1261806	3/8"x10	10
1261812	1/2"x10	10
1261813	1/2"x12	10
1261814	1/2"x14	10
1261815	1/2"x16	10
1261821	3/4"x18	10

ART. 5616

Gomito a muro con attacco femmina tenuta O-Ring.
O-Ring seal female connection wall elbow joint.



codice code	∅	conf. pack
1262012	1/2"x12	10
1262014	1/2"x14	10
1262016	1/2"x16	10

RACCORDI IN RAME



Fig. 1R

ART. 5650

Curva a 90° M.F. in rame 1R.
Copper 1R M.F. 90° bent pipe.

codice code	∅	conf. pack
1040110	10	10
1040112	12	10
1040114	14	10
1040116	16	10
1040118	18	10
1040122	22	10
1040128	28	10
1040135	35	5
1040142	42	5
1040154	54	1



Fig. 2R

ART. 5652

Curva a 90° F.F. in rame 2R.
Copper 2R F.F. 90° bent pipe.

codice code	∅	conf. pack
1040210	10	10
1040212	12	10
1040214	14	10
1040216	16	10
1040218	18	10
1040222	22	10
1040228	28	10
1040235	35	5
1040242	42	5
1040254	54	1



Fig. 90R

ART. 5654

Angolo a 90° F.F. in rame 90 R.
Copper a 90 R F.F. 90° corner connection.

codice code	∅	conf. pack
1040710	10	10
1040712	12	10
1040714	14	10
1040716	16	10
1040718	18	10
1040722	22	10
1040728	28	10
1040735	35	5
1040742	42	5
1040754	54	1



Fig. 92R

ART. 5656

Angolo a 90° M.F. in rame 92 R.
Copper a 92 R M.F. 90° corner connection.

codice code	∅	conf. pack
1040810	10	10
1040812	12	10
1040814	14	10
1040816	16	10
1040818	18	10
1040822	22	10
1040828	28	10
1040835	35	5
1040842	42	5
1040854	54	1



Fig. 41R

ART. 5658

Curva a 45° F.F. in rame 41 R.
Copper 41 R F.F. 45° bent pipe.

codice code	∅	conf. pack
1040410	10	10
1040412	12	10
1040414	14	10
1040416	16	10
1040418	18	10
1040422	22	10
1040428	28	10
1040435	35	5
1040442	42	5
1040454	54	5



Fig. 40R

ART. 5660

Curva a 45° M.F. in rame 40 R.
Copper 40 R M.F. 45° copper bent pipe.

codice code	∅	conf. pack
1040310	10	10
1040312	12	10
1040314	14	10
1040316	16	10
1040318	18	10
1040322	22	10
1040328	28	10
1040335	35	5
1040342	42	5
1040354	54	5



Fig. 243R

ART. 5662

Manicotti ridotto M.F. in rame 243 R.
243 R M.F. copper reducing coupling.

codice code	∅	conf. pack
1041301	10-8	10
1041302	12-10	10
1041303	14-10	10
1041304	14-12	10
1041305	16-10	10
1041306	16-12	10
1041307	16-14	10
1041308	18-12	10
1041310	18-14	10
1041311	18-16	10
1041312	22-12	10
1041313	22-14	10
1041314	22-16	10
1041315	22-18	10
1041316	28-12	10
1041317	28-14	10
1041318	28-16	10
1041319	28-18	10
1041320	28-22	10
1041321	35-18	10
1041322	35-22	10
1041323	35-28	10
1041324	42-28	10
1041325	42-35	10



Fig. 270R

ART. 5664

Manicotto 270 R.
270 R coupling.

codice code	∅	conf. pack
1041410	10	10
1041412	12	10
1041414	14	10
1041416	16	10
1041418	18	10
1041422	22	10
1041428	28	10
1041435	35	10
1041442	42	5
1041454	54	5



Fig. 130R

ART. 5666

Tee in rame 130 R FFF.
130 R copper Tee pipe fitting.

codice code	∅	conf. pack
1041010	10	10
1041012	12	10
1041014	14	10
1041016	16	10
1041018	18	10
1041022	22	10
1041028	28	10
1041035	35	5
1041042	42	5
1041054	54	1



Fig. 130RR

ART. 5668

Tee in rame 130 RR.
130 RR copper Tee pipe fitting.

codice code	∅	conf. pack
1041102	12-10-10	10
1041103	12-10-12	10
1041104	12-12-10	10
1041105	12-14-12	10
1041106	12-16-12	10
1041107	12-18-12	10
1041108	14-12-12	10
1041110	14-12-14	10
1041111	14-14-10	10
1041112	14-14-12	10
1041113	14-16-12	10
1041114	14-16-14	10
1041115	14-18-12	10
1041116	14-18-14	10
1041117	14-22-14	10
1041118	16-12-12	10
1041119	16-12-14	10
1041120	16-12-16	10
1041122	16-14-14	10
1041123	16-14-16	10
1041124	16-16-12	10
1041125	16-16-14	10
1041126	16-18-16	10
1041127	16-22-16	10
1041128	18-12-12	10
1041129	18-12-14	10
1041130	18-12-18	10
1041133	18-14-18	10
1041134	18-16-16	10
1041135	18-16-18	10
1041137	18-18-14	10
1041138	18-18-16	10



Fig. 130RR

ART. 5670

Tee in rame 130 RR.
130 RR copper Tee pipe fitting.

codice code	∅	conf. pack
1041139	18-22-18	10
1041140	22-12-12	10
1041142	22-14-14	10
1041144	22-14-22	10
1041145	22-16-16	10
1041146	22-16-22	10
1041148	22-18-18	10
1041149	22-18-22	10
1041150	22-22-12	10
1041152	22-22-16	10
1041155	28-12-28	10
1041156	28-14-28	10
1041157	28-16-28	10
1041160	28-18-28	10
1041162	28-22-22	10
1041163	28-22-28	10
1041166	35-28-35	5



Fig. 85R

ART. 5672

Saltatubi F.F. in rame 85R.
85 R F.F. copper pipe welder.

codice code	∅	conf. pack
1040512	12	10
1040514	14	10
1040516	16	10
1040518	18	10
1040522	22	10



Fig. 243G

ART. 5674

Raccordo diretto in rame. Filetto M.
Copper straight fitting M thread.

codice code	∅	conf. pack
1041372	10x1/2"	10
1041373	12x3/8"	10
1041374	12x1/2"	10
1041376	14x1/2"	10
1041377	16x1/2"	10
1041379	18x1/2"	10
1041380	18x3/4"	10
1041382	22x3/4"	10
1041383	22x1"	10
1041384	28x3/4"	10
1041385	28x1"	10



Fig. 270G

ART. 5676

Raccordo diretto in rame. Filetto F.
Copper straight fitting F thread.

codice code	∅	conf. pack
1041507	12x3/8"	10
1041513	12x1/2"	10
1041514	14x1/2"	10
1041515	16x1/2"	10
1041516	18x1/2"	10
1041521	18x3/4"	10
1041522	22x3/4"	10
1041524	22x1"	10

RACCORDI IN BRONZO



Fig. 472FR

ART. 5678

Gomito c/supporto FF472 FR.
FF472 FR bronze welding elbow joint with support.

codice code	∅	conf. pack
1282212	1/2"x12	10
1282214	1/2"x14	10
1282216	1/2"x16	10



Fig. 90FR

ART. 5680

Gomito FF 90FR.
90FR F.F. bronze elbow joint.

codice code	∅	conf. pack
1042006	10x3/8"	10
1042007	12x3/8"	10
1042013	12x1/2"	10
1042008	14x3/8"	10
1042014	14x1/2"	10
1042015	16x1/2"	10
1042020	16x3/4"	10
1042016	18x1/2"	10
1042021	18x3/4"	10
1042017	22x1/2"	10
1042022	22x3/4"	10
1042024	22x1"	10
1042023	28x3/4"	10
1042025	28x1"	10
1042028	35x1"1/4"	5

ART. 5682

Bocchettone conico a saldare F
filettato M 341 FR.
M. 341 FR F. threaded welding conic pipe union.



Fig. 341FR

codice code	∅	conf. pack
1265006	3/8"x10	10
1265007	3/8"x12	10
1265015	1/2"x16	10
1265016	1/2"x18	10
1265020	3/4"x16	10
1265021	3/4"x18	10
1265022	3/4"x22	10
1265024	1"x22	5
1265025	1"x28	5
1265028	1"1/4"x35	5

ART. 5684

Gomito MF 92 FR.
92 FR M.F. bronze elbow joint.



Fig. 92FR

codice code	∅	conf. pack
1042106	10x3/8"	10
1042107	12x3/8"	10
1042113	12x1/2"	10
1042108	14x3/8"	10
1042114	14x1/2"	10
1042115	16x1/2"	10
1042116	18x1/2"	10
1042121	18x3/4"	10
1042122	22x3/4"	10
1042124	22x1"	10
1042125	28x1"	10



Fig. 130FR

ART. 5686

Tee femmina 130 FR.
130 FR bronze female Tee pipe fitting.

codice code	∅	conf. pack
1042406	10x3/8"	10
1042407	12x3/8"	10
1042413	12x1/2"	10
1042408	14x3/8"	10
1042414	14x1/2"	10
1042415	16x1/2"	10
1042416	18x1/2"	10
1042421	18x3/4"	10
1042417	22x1/2"	10
1042422	22x3/4"	10



Fig. 270FR

ART. 5688

Manicotto FF 270 FR.
270 FR bronze coupling.

codice code	∅	conf. pack
1042706	10x3/8"	10
1042707	12x3/8"	10
1042713	12x1/2"	10
1042708	14x3/8"	10
1042714	14x1/2"	10
1042715	16x1/2"	10
1042720	16x3/4"	10
1042716	18x1/2"	10
1042721	18x3/4"	10
1042722	22x3/4"	10
1042724	22x1"	10
1042723	28x3/4"	10
1042718	28x1"	10
1042728	35x1"1/4"	5
1042730	42x1"1/2"	5
1042731	2"x54	1



Fig. 243FR

ART. 5690

Vite presa M243 FR.
243 FR M. clamp bronze screw.

codice code	∅	conf. pack
1042606	3/8"x10	10
1042607	3/8"x12	10
1042608	3/8"x14	10
1042605	1/2"x10	10
1042613	1/2"x12	10
1042614	1/2"x14	10
1042615	1/2"x16	10
1042616	1/2"x18	10
1042617	1/2"x22	10
1042619	3/4"x14	10
1042620	3/4"x16	10
1042621	3/4"x18	10
1042622	3/4"x22	10
1042623	3/4"x28	10
1042624	1"x22	10
1042625	1"x28	10
1042626	1"x35	5
1042627	1"1/4x28	10
1042628	1"1/4x35	5
1042630	1"1/2x42	5
1042643	2"x54	1

RACCORDI IN MATERIALE ATOSSICO PER ENOLOGIA



ART. 5300

Rubinetto con filetta maschio.
Ball valve long tank adapter.

codice code	Ø	conf. pack
1150108	1/2"x20	10
1150109	3/4"x25	10
1150110	1"x30 fil. lungo	5



ART. 5302

Filtro vinaccia.
Marc filter.

codice code	conf. pack
1150100	10



ART. 5304

Attacco serbatoio M.
M tank adaptor.

codice code	Ø	conf. pack
1150208	1/2"	20
1150209	3/4"	20
1150210	1"	20
1150211	1"1/4	10
1150212	1"1/2	10
1150213	2"	10



ART. 5306

Raccordo 3 pezzi con sede conica portagomma curvo tenuta conica.
3 piece elbow fitting hose to thread (conical seat).

codice code	Ø	conf. pack
1150302	3/4"x20	10
1150305	1"x25	10
1150306	1"x30	10
1150308	1"x35	10
1150309	1"x40	10
1150310	1"1/4x30	10
1150312	1"1/4x35	10
1150313	1"1/4x40	10
1150315	1"1/2x35	10
1150316	1"1/2x40	10
1150317	1"1/2x50	5
1150318	2"x50	5



ART. 5308

Raccordo 3 pezzi con sede conica portagomma dritto.
3 piece straight fitting hose to thread (conical seat).

codice code	Ø	conf. pack
1150402	3/4"x20	10
1150404	1"x20	10
1150405	1"x25	10
1150406	1"x30	10
1150408	1"x35	10
1150409	1"x40	10
1150410	1"1/4x30	10
1150412	1"1/4x35	10
1150413	1"1/4x40	10
1150416	1"1/2x40	10
1150417	1"1/2x50	5
1150418	2"x50	5
1150419	2"x60	5



ART. 5310

Raccordo 3 pezzi per tubo sede conica.
3 piece straight fitting hose to hose (conical seat).

codice code	Ø	conf. pack
1150513	13x13	10
1150516	16x16	10
1150520	20x20	10
1150522	22x22	10
1150525	25x25	10
1150530	30x30	10
1150532	32x32	10
1150535	35x35	10
1150540	40x40	10
1150550	50x50	5
1150560	60x60	5



ART. 5312

Portagomma dritto con filetto M.
M threaded straight hose nozzle.

codice code	Ø	conf. pack
1150604	3/8"x10	20
1150605	3/8"x12	20
1150606	3/8"x16	20
1150607	1/2"x13	20
1150608	1/2"x16	20
1150609	1/2"x20	20
1150610	3/4"x10	20
1150611	3/4"x12	20
1150612	3/4"x13	20
1150613	3/4"x16	20
1150614	3/4"x20	20
1150615	3/4"x25	20
1150616	1"x20	10
1150617	1"x22	10
1150618	1"x25	10
1150619	1"x30	10
1150620	1"x32	10
1150621	1"1/4x25	10
1150622	1"1/4x30	10
1150624	1"1/4x35	10
1150625	1"1/4x40	10
1150627	1"1/2x40	5
1150628	1"1/2x50	5
1150629	2"x50	5
1150630	2"x60	5



ART. 5314

Portagomma curvo filettato M.
M threaded straight hose nozzle.

codice code	Ø	conf. pack
1150705	3/8"x12	20
1150707	1/2"x12	20
1150708	1/2"x16	20
1150709	1/2"x20	20
1150711	3/4"x12	20
1150714	3/4"x20	20
1150715	3/4"x25	20
1150718	1"x25	10
1150719	1"x30	10
1150720	1"x32	10
1150722	1"1/4x30	10
1150723	1"1/4x32	10
1150727	1"1/2x40	5



ART. 5316

Valvola di fondo in resina acetalica F con filtro.
F foot valve.

codice code	Ø	conf. pack
1151008	1/2"	10
1151009	3/4"	10
1151010	1"	5



ART. 5318

Valvola di fondo in resina acetalica F con filtro.
F foot valve.

codice code	Ø	conf. pack
1150811	1"1/4	10
1150812	1"1/2	10
1150813	2"	5



ART. 5320

Valvola di ritegno in resina acetalica F senza filtro.
F foot valve without filter.

codice code	Ø	conf. pack
1150908	1/2"	10
1150909	3/4"	10
1150910	1"	5

RACCORDI E TUBI IN POLIETILENE

ART. 5400

Tubo in polietilene per acqua AD PE100 a norma UNI 12201. PN16 sino a 1"1/4 PN 10 oltre.

Water polyethylene tube High-density.



codice code	Ø	DN	rotoli mt
3100508	1/2"	20	100
3100509	3/4"	25	100
3100510	1"	32	100
3100511	1"1/4	40	100
3100512	1"1/2	50	100
3100513	2"	63	100

ART. 5402

Tubo in polietilene per gas S 5 UNI ISO 4437. S 5 gas polyethylene tube.



codice code	Ø	DN	mt
3101008	1/2"	20	200
3101009	3/4"	25	100
3101010	1"	32	100
3101011	1"1/4	40	100
3101012	1"1/2	50	100
3101013	2"	63	100

ART. 5404

Boccole di rinforzo in ottone per tubo gas politene S 5.

S 5 gas tube brass reinforcing bushes.



codice code	Ø	DN	conf. pack
1202220	1/2"	20	25
1202225	3/4"	25	25
1202232	1"	32	25
1202240	1"1/4	40	10
1202250	1"1/2	50	10
1202263	2"	63	5

ART. 5406

Raccordo in PP-M PN 16.
PP-M pipe fittings.



codice code	Ø	DN	conf. pack
1220220	1/2"	20	25
1220225	3/4"	25	50
1220232	1"	32	25
1220240	1"1/4	40	15
1220250	1"1/2	50	10
1220263	2"	63	4

ART. 5408

Raccordo in PP-F PN16.
PP-F pipe fittings.



codice code	Ø	DN	conf. pack
1220420	1/2"	20	10
1220425	3/4"	25	10
1220432	1"	32	10
1220440	1"1/4	40	10
1220450	1"1/2	50	5
1220463	2"	63	2

ART. 5410

Manicotto in PP-FF PN16.
PP coupling pipe fittings



codice code	Ø	conf. pack
1220620	20x20	10
1220625	25x25	10
1220632	32x32	10
1220640	40x40	10
1220650	50x50	5
1220663	63x63	2

ART. 5412

Raccordo A TEE in PP-FF con derivazione F PN16.

F branch PP pipe fitting.



codice code	Ø	DN	conf. pack
1221020	1/2"	20	10
1221025	3/4"	25	10
1221032	1"	32	10
1221040	1"1/4	40	10
1221050	1"1/2	50	5
1221063	2"	63	2

ART. 5414

TEE in PP PN 16.
PP TEE pipe fitting.



codice code	Ø	conf. pack
1221220	20x20x20	10
1221225	25x25x25	10
1221232	32x32x32	10
1221240	40x40x40	10
1221250	50x50x50	5
1221263	63x63x63	2

ART. 5416

Gomito in PP a 90° PN 16.
90° PP elbow joint.



codice code	Ø	conf. pack
1221420	20x20	10
1221425	25x25	10
1221432	32x32	10
1221440	40x40	10
1221450	50x50	5
1221463	63x63	2

ART. 5418

Gomito in PP derivazione F PN16.
F branch PP elbow joint.



codice code	Ø	conf. pack
1221820	20x1/2"	10
1221825	25x3/4"	10
1221832	32x1"	10
1221840	40x1"1/4	10
1221850	50x1"1/2	5
1221863	63x2"	2

ART. 5420

Gomito in PP derivazione M PN16.
M branch PP elbow joint.



codice code	Ø	DN	conf. pack
1221620	1/2"	20	10
1221625	3/4"	25	10
1221632	1"	32	10
1221640	1"1/4	40	10
1221650	1"1/2	50	5
1221663	2"	63	2

ART. 5422

Presca a staffa c/boccola di rinforzo.
PP clamp with reinforcing bush.



codice code	Ø	DN	conf. pack
1222328	1/2"	40	2
1222329	1/2"	50	2
1222340	3/4"	50	2
1222344	1"	63	4
1222354	1"	75	4
1222365	1"1/4	90	4
1222375	2"	110	6

GIUNTI ELASTICI E COLLARI DI RIPARAZIONE

ART. 5850

Giunti elastici flangiati.
Flange flexible couplings



codice <i>code</i>	Ø	DN	conf. <i>pack</i>
2324403	1"1/4	32	2
2324404	1"1/2	40	2
2324405	2"	50	2
2324406	2"1/2	65	2
2324408	3"	80	2
2324410	4"	100	1
2324412	5"	125	1
2324415	6"	150	1
2324420	8"	200	1

Corpo in Neoprene con rinforzi di tela in Nylon. Flange PN 10/16 fino al DN 150 e PN 10 dal DN 200 in acciaio al carbonio zincate. Temperatura di esercizio da -10°C a +105°C. Pressione massima di esercizio 15 bar. Pressione di scoppio: 60 bar Fluidi: acqua, acqua di mare, acidi deboli, aria compressa. A norme DIN 50049 3.1B.

ART. 5852

Giunti elastici filettati corpo in Neoprene.
Flexible couplings.



codice <i>code</i>	Ø	conf. <i>pack</i>
2324009	3/4"	2
2324010	1"	2
2324011	1"1/4	2
2324012	1"1/2	2
2324013	2"	1
2324014	2"1/2	1
2324015	3"	1

ART. 5854

Giunti elastici filettati con bocchettoni in ottone giallo corpo in Nitrile.
Brass yellow unions.



codice <i>code</i>	Ø	conf. <i>pack</i>
2324059	3/4"	2
2324060	1"	2
2324061	1"1/4	1
2324062	1"1/2	1
2324063	2"	1

ART. 5860

Presca rapida in ottone.
Brass clamp.



codice <i>code</i>	Ø	conf. <i>pack</i>
1202008	1/2"x1/2"	5
1202009	3/4"x1/2"	5
1202010	1"x3/4"	5
1202011	1"1/4x3/4"	4
1202012	1"1/2x3/4"	2
1202013	2"x1"1/2	1

ART. 5862

Collare di riparazione a 1 tirante.
Repair clamp with one bolt.



codice <i>code</i>	Ø	DN	conf. <i>pack</i>
1190221	1/2"	21-25	25
1190226	3/4"	26-30	25
1190233	1"	33-37	25
1190242	1"1/4	42-45	20
1190248	1"1/2	48-51	20
1190260	2"	60-64	20
1190271	2"1/2	71-76	20
1190287	3"	87-93	20
1190298	4"	112-118	20
1190299	4"	131-136	10
1190218	5"	139-145	10
1190219	5"	156-162	10

ART. 5864

Collare di riparazione a 3 tiranti.
Repair clamp single body with three bolt.



codice <i>code</i>	DN	conf. <i>pack</i>
1190348	48-56	5
1190356	56-64	5
1190360	60-68	5
1190368	68-78	5
1190378	78-88	5
1190388	88-98	5
1190398	98-108	5
1190310	108-118	5
1190399	114-126	5
1190312	126-138	5
1190313	138-150	5
1190314	140-153	1
1190316	150-162	1
1190318	168-182	1
1190320	186-198	1

ART. 5866

Collare di derivazione per tubi in acciaio, ghisa e cemento - amianto.
Tapping saddles for steel ductile iron, cast iron and cement pipes.



codice <i>code</i>	Filetto mm	conf. <i>pack</i>
0269612	1" 40	10
0269605	1" 50	10
0269602	1" 60	10
0269616	1" 80	10
0269617	1" 100	10
0269615	1" 150	5
0269621	2" 200	1

ART. 5868

Valvola di derivazione a squadra FLUXI.



Corpo e cappello in ghisa sferoidale. Albero di manovra in acciaio inox o ghisa sferoidale. Obturatore in acciaio inox rivestito in EPDM idonea per servizio acqua potabile (PFA 16 BAR). Verniciatura epossidica spessore medio 250 micron. Filettatura conica Gas maschio UNI ISO 7/1 e cilindrica Gas femmina UNI ISO 228/1.

codice <i>code</i>	DN entrata	DN uscita	conf. <i>pack</i>
0269630	1"1/4	1"	1
0269631	1"1/4	1"1/4	1
0269632	1"1/2	1"1/2	1

ART. 5870

Complesso di manovra mt. 1.



codice <i>code</i>	conf. <i>pack</i>
0269650	1

VALVOLE A FARFALLA WAFER e LUG, SARACINESCHE

ART. 5030

Saracinesche in ghisa corpo piatto. Tenuta premistoppa - PN 16 fino 150°C.

PN 16 flat core cast iron gate valves which are not subject to maintenance operations.

codice code	DN	conf. pack
1138205	50	1
1138206	65	1
1138208	80	1
1138210	100	1
1138212	125	1
1138215	150	1
1138220	200	1

ART. 5032

Saracinesche in ghisa cuneo gommato corpo piatto PN 16 - sino 80°C.

PN 16 - cast iron gate valves with rubberised wedge.

codice code	DN	conf. pack
1138005	50	1
1138006	65	1
1138008	80	1
1138010	100	1
1138012	125	1
1138015	150	1
1138020	200	1

ART. 5034

Saracinesche in ghisa a corpo ovale con cuneo gommato tenuta superiore O-Ring PN 16. è consentito l'impiego fino a 80°C.

PN16 cast iron gate valves with oval body.

codice code	DN	conf. pack
1138405	50	1
1138406	65	1
1138408	80	1
1138410	100	1
1138412	125	1
1138415	150	1
1138420	200	1

ART. 5036

Filtri a "Y" in ghisa PN 16.

Cast iron y filter PN16.

codice code	Ø	conf. pack
1140605	50	1
1140606	65	1
1140608	80	1
1140610	100	1
1140612	125	1
1140615	150	1
1140620	200	1

ART. 5038

Giunti universali di accoppiamento per tubi in acciaio, ghisa, PVC e cemento amianto.

codice code	DE min mm	DE max mm
1203905	49	71
1203907	62	84
1203908	80	102
1203911	97	127
1203913	123	153
1203916	151	181
1203921	211	241

ART. 5040

Valvola a farfalla tipo WAFER Guarn EPDM, corpo in ghisa GG25, disco in ghisa PN 10/16, pressione 0-16 bar, temperatura -10°+120°C.

Butterfly valve type wafer, body in cast iron, disc in cast iron, pressure 0-10 bar, temperature -10° + 120°C.

codice code	Ø	conf. pack
1140278	50	1
1140279	65	1
1140280	80	1
1140290	100	1
1140281	125	1
1140282	150	1
1140283	200	1
1140284	250	1
1140285	300	1

ART. 5042

Valvole a farfalla tipo LUG Guarn EPDM, corpo in ghisa GG25, disco in ghisa PN 16, pressione 0-16 bar, temperatura -10°+120°C.

Butterfly valve LUG type, body in cast iron, disc in cast iron, pressure PN 16 bar, temperature -10°+120°C.

codice code	Ø	conf. pack
1140291	50	1
1140292	65	1
1140293	80	1
1140294	100	1
1140295	125	1
1140296	150	1
1140297	200	1
1140298	250	1
1140299	300	1

ART. 5044

Valvole a farfalla per gas con maniglia gialla, corpo in ghisa GG40 farfalla ghisa, guarnizione NBR tipo LUG omologata PEHD.

Butterfly valve for gas, body in cast iron disc in stainless steel, NBR gasket LUG type. Yellow handle.

codice code	Ø	conf. pack
1140375	50	1
1140376	65	1
1140378	80	1
1140380	100	1
1140382	125	1
1140385	150	1
1140390	200	1
1140392	250	1
1140395	300	1

ART. 5046

Valvole di ritegno wafer a disco corpo in ghisa GG25 interno AISI 304 molla AISI 304.

Wafer check valve.

codice code	DN	alt.	largh.	Ø
1140715	15	16	45	53
1140720	20	19	55	63
1140725	25	22	65	73
1140732	32	28	78	84
1140740	40	31,5	88	94
1140750	50	40	98	107
1140765	65	46	118	126
1140780	80	50	134	144
1140799	100	60	154	162

LINEA "FIRE"

ART. 5000

Cassetta antincendio per incasso certificata CE. Completa di vetro, lancia frazionatrice e manichetta.

Certified inset fire box with hose.

DN 45 UNI EN 671/2CE

codice code	mt	mis. cassetta box size
0300420	20	560x360x150
0300425	25	560x360x150
0300430	30	560x360x150



ART. 5002

Cassetta antincendio per esterno certificata CE, completa di vetro, lancia frazionatrice e manichetta.

Certified outer fire box with hose.

DN 45 UNI EN 671/2CE

codice code	mt	mis. cassetta box size
0301420	20	610x370x210
0301425	25	610x370x210
0301430	30	610x370x210



ART. 5004

Cassetta antincendio "NASPO" DN 25 UNI 671/1 certificata CE completa di vetro, lancia frazionatrice.

Certified NASPO fire box with hose.

codice code	mt	mis. cassetta box size
0302420	20	650x700x200
0302425	25	650x700x200
0302430	30	650x700x270



ART. 5006

Tubo antincendio certificato bianco raccordato. DN 45 EN 14540 - UNI 9487

Certified white fire branch pipe.

codice code	UNI 45 mt	conf. pack
0303120	20	1
0303125	25	1
0303130	30	1



ART. 5008

Rubinetto idrante in ottone.

Brass hydrant tap.

codice code	UNI 45	conf. pack
0304811	1"1/4	1
0304812	1"1/2	1



ART. 5010

Gruppo motopompa per nuovi impianti UNI 10779 PN12, 1 Idrante.

codice code	Ø	conf. pack
0305713	2"x70	1
0305714	2"1/2x70	1



ART. 5012

Gruppo motopompa di mandata a norma UNI 10779 PN 12 idrante.

codice code		conf. pack
0305723	2"x70	1
0305724	2"1/2x70	1



ART. 5014

Valvola di sicurezza tarabile squadro per gruppi motopompa. Taratura 1 - 12 bar (tarate 3 bar).

Motor pump square calibrated safety valve with 1-12 bar calibration (3 bar calibration).

codice code		conf. pack
2326808	1/2"	1
2326809	3/4"	1
2326810	1"	1
2326811	1"1/4	1



ART. 5016

Lancia frazionatrice DN 45 - UNI EN 671/2, Copper spear.

codice code	conf. pack
0304080	1



ART. 5018

Lancia frazionatrice DN 70.

codice code	conf. pack
0304081	1



ART. 5020

Lastra trasparente infrangibile per cassette incasso DN 45 Anti UV, Fire glass.

codice code	H	conf. pack
0304675	53,5x34,7	1



ART. 5022

Lastra trasparente infrangibile per cassette esterne DN 45 Anti UV, Fire glass.

codice code	H	conf. pack
0304677	49,5x29,2	1



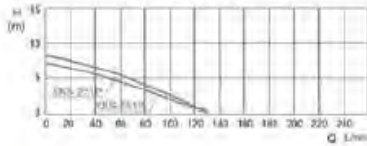
ELETTROPOMPE PVC - INOX

ART. 5050

ELETTROPOMPE SOMMERGIBILI IN PVC. LIMITI D'IMPIEGO:
Temperatura del liquido fino a 35°C
Max temperatura ambiente fino a 40°C.



ACQUA PULITA



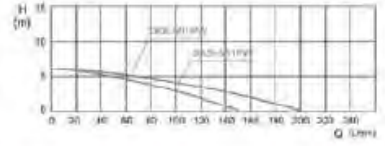
modello	XKS-251P	XKS-351P
Codice	6140202	6140204
Portata max	7 (m³/h)	8 (m³/h)
Potenza max	Kw 0,25 - HP 0,33	Kw 0,35 - HP 0,50
Prevalenza	6 (m)	7 (m)
Attacco	1"1/4	1"1/4

ART. 5052

ELETTROPOMPE SOMMERGIBILI IN PVC. LIMITI D'IMPIEGO:
Temperatura del liquido fino a 35°C
Max temperatura ambiente fino a 40°C.



ACQUA CARICA



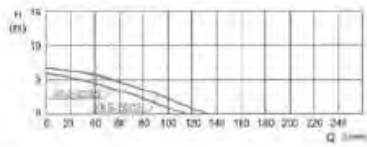
modello	XKS-401PW	XKS-551PW
Codice	6140216	6140218
Portata max	9 (m³/h)	12 (m³/h)
Potenza max	Kw 0,40 - HP 0,60	Kw 0,55 - HP 0,70
Prevalenza	6 (m)	6 (m)
Attacco	1"1/4	1"1/4

ART. 5054

ELETTROPOMPE SOMMERGIBILI INOX. LIMITI D'IMPIEGO:
Temperatura del liquido fino a 35°C
Max temperatura ambiente fino a 40°C.



ACQUA PULITA



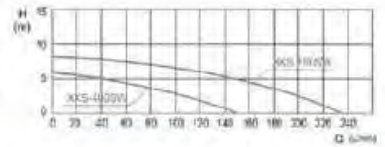
modello	XKS-250S	XKS-350S
Codice	6140252	6140254
Portata max	7 (m³/h)	8 (m³/h)
Potenza max	Kw 0,25 - HP 0,33	Kw 0,35 - HP 0,50
Prevalenza	6 (m)	7 (m)
Attacco	1"1/4	1"1/4

ART. 5056

ELETTROPOMPE SOMMERGIBILI INOX. LIMITI D'IMPIEGO:
Temperatura del liquido fino a 35°C
Max temperatura ambiente fino a 40°C.



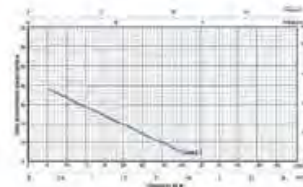
ACQUA CARICA



modello	XKS-400SW	XKS-750SW
Codice	6140266	6140268
Portata max	9 (m³/h)	14 (m³/h)
Potenza max	Kw 0,40 - HP 0,60	Kw 0,75 - HP 1
Prevalenza	6 (m)	8 (m)
Attacco	1"1/2	1"1/2

ART. 5070

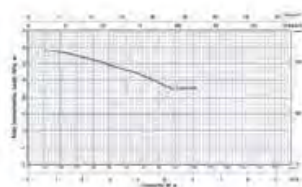
ELETTROPOMPE PERIFERICHE. LIMITI D'IMPIEGO:
Temperatura del liquido fino a 60°C
Max temperatura ambiente fino a 40°C.



modello	LKm 60-1
Codice	6150405
Portata max	40 (lt/min)
Potenza max	Kw 0,37 - HP 0,50
Prevalenza	40-8 (m)
Attacco	1"

ART. 5080

ELETTROPOMPE CENTRIFUGHE. LIMITI D'IMPIEGO:
Temperatura del liquido fino a 60°C
Max temperatura ambiente fino a 40°C.



modello	LCm 158
Codice	6150210
Portata max	100 (lt/min)
Potenza max	Kw 0,75 - HP 1,00
Prevalenza	36-8 (m)
Attacco	1"



EMIL

ART. 5150

Regolatore elettronico per elettropompe. Alimentazione 220/240 50/60 HZ IP65. Potenza max della pompa 1,5 HP. (1,1 KW). Pressione massima 10 bar. Temperatura max 60°C.

codice code	pressione di partenza	conf. pack
2261460	bar 1,5	2
2261465	bar 2,2	2



EMILPRESS

ART. 5154

Regolatore elettronico per elettropompe EMILPRESS con pressione di ripartenza programmabile. (1,5÷2,2 bar) in funzione dell'altezza della colonna d'acqua. Alimentazione 220/240 50/60 HZ IP65. Potenza max della pompa 1,5 HP. (1,1 KW). Pressione massima 10 bar. Temperatura max 60°C.

codice code	attacco	conf. pack
2261601	1"	2

ART. 5160

Valvola di ritegno a molla EUROPA ITAP. Original EUROPA back valve.

codice code	Ø	conf. pack
2320207	3/8"	10
2320208	1/2"	10
2320209	3/4"	10
2320210	1"	10
2320211	1 1/4"	5
2320212	1 1/2"	5
2320213	2"	5
2320214	2 1/2"	5
2320215	3"	5
2320217	4"	5



ORIGINALE EUROPA

ART. 5162

Valvola di ritegno a molla RE. RE back valve.

codice code	Ø	conf. pack
2320227	3/8"	20
2320228	1/2"	20
2320229	3/4"	12
2320230	1"	15
2320231	1 1/4"	8
2320232	1 1/2"	6
2320233	2"	3
2320234	2 1/2"	1
2320235	3"	1
2320237	4"	1



ECO

ART. 5164

Filtro per valvola EUROPA. EUROPA valve filter.

codice code	Ø	conf. pack
2320407	3/8"	30
2320408	1/2"	54
2320409	3/4"	32
2320410	1"	30
2320411	1 1/4"	20
2320412	1 1/2"	6
2320413	2"	4
2320414	2 1/2"	1
2320415	3"	1
2320417	4"	1



ART. 5166

Valvola di fondo tubolare in ottone. Brass tubular back valve.

codice code	Ø	conf. pack
2321008	1/2"	10
2321009	3/4"	10
2321010	1"	10
2321011	1 1/4"	5
2321012	1 1/2"	5
2321013	2"	2



ART. 5168

Valvola di fondo in ottone. Brass back valve.

codice code	Ø	conf. pack
2321408	1/2"	10
2321409	3/4"	10
2321410	1"	10
2321411	1 1/4"	5
2321412	1 1/2"	5
2321413	2"	2
2321414	2 1/2"	2
2321415	3"	1



ART. 5170

Rubinetto tipo Sicilia MM. MM Sicily tap.

codice code	Ø	conf. pack
1109008	MM 1/2"	10
1109009	MM 3/4"	10

Rubinetto tipo Sicilia M.F. MF Sicily tap.

codice code	Ø	conf. pack
1109108	MF 1/2"	10
1109109	MF 3/4"	10

ART. 5172

Valvola antisabbia tipo FIAT. FIAT anti-sand valve.

codice code	Ø	conf. pack
2321610	1"	1
2321611	1 1/4"	1
2321612	1 1/2"	1
2321613	2"	1



ART. 5174

Valvola di ritegno Roma. Rome check valve.

codice code	Ø	conf. pack
2321208	1/2"	1
2321209	3/4"	1
2321210	1"	1
2321211	1 1/4"	1



ART. 5176

Rubinetto tipo Misura con cappello a sigillo. Sealing cap measure tap.

codice code	Ø	conf. pack
1109707	3/8"MF	10
1109708	1/2"MF	10
1109757	3/8"FF	10
1109758	1/2"FF	10



ART. 5178

Rubinetto tipo Zuppardi. Zuppardi tap.

codice code	Ø	conf. pack
1109508	1" x 1/2"	10
1109509	1" x 3/4"	10



ART. 5180

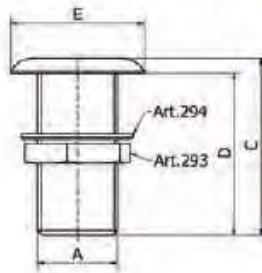
Rubinetto idrante a squadro. Square hydrant tap.

codice code	Ø	conf. pack
0307208	1/2"	10
0307209	3/4"	5
0307210	1"	2



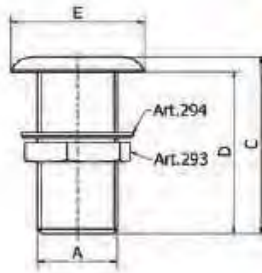
LINEA "NAUTICA"

Art.280 Scarico *Discharge*



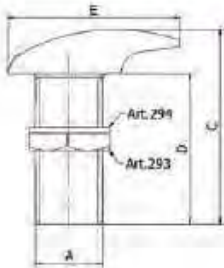
Misura	A	E	C	D	gr.	Inner	box
3/8"	3/8"	36	57	52	86	35	350
1/2"	1/2"	40	63	58	120	28	224
3/4"	3/4"	47	72	67	200	18	144
1"	1"	56	76	70	306	12	96
1.1/4"	1.1/4"	65	83	77	415	9	72
1.1/2"	1.1/2"	72	84	78	557	6	60
2"	2"	83	102	95	864	1	30

Art.281 Scarico cromato *Chromium plated discharge*



Misura	A	E	C	D	gr.	Inner	box
3/8"	3/8"	36	57	52	86	35	350
1/2"	1/2"	40	63	58	120	28	224
3/4"	3/4"	47	72	67	200	18	144
1"	1"	56	76	70	306	12	96
1.1/4"	1.1/4"	65	83	77	415	9	72
1.1/2"	1.1/2"	72	84	78	557	6	60
2"	2"	83	102	95	864	1	30

Art.282 Ombrinale *Discharge*



Misura	A	E	C	D	gr.	Inner	box
1"	1"	60	100	73	356	8	8
1.1/4"	1.1/4"	63	104	78	556	5	5
1.1/2"	1.1/2"	79	113	81	847	4	4

Art.283 Ombrinale cromato *Chromium plated discharge*

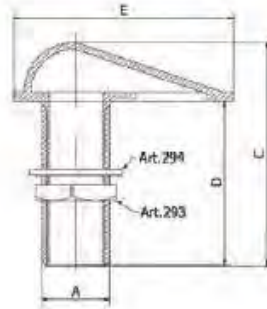


Misura	A	E	C	D	gr.	Inner	box
1"	1"	85	100	73	400	8	8
1.1/4"	1.1/4"	90	104	78	560	5	5
1.1/2"	1.1/2"	108	113	81	898	4	4

Art.284

Presca a mare

Intake strainer

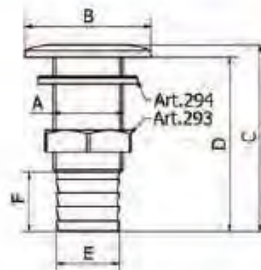


Misura	A	E	C	D	gr.	Inner box
3/8"	3/8"	75	89	68	189	10 120
1/2"	1/2"	90	99	74	344	15 15
3/4"	3/4"	104	103	74	447	12 12
1"	1"	108	113	83	544	8 8
1.1/4"	1.1/4"	117	124	92	754	5 5
1.1/2"	1.1/2"	133	136	101	1036	4 24
2"	2"	148	123	88	1204	1 18

Art.287

Scarico con portagomma

Discharge with hose connector

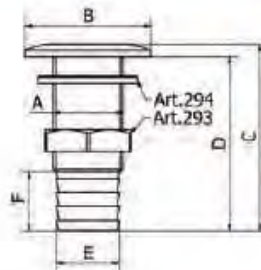


Misura	A	F	E	C	D	B	gr.	Inner box
3/8"	3/8"	23	15	57	52	36	80	15 15
1/2"	1/2"	26	19	63	58	40	107	12 12
3/4"	3/4"	25	24	72	67	47	199	18 18
1"	1"	30	30	76	70	56	296	12 12
1.1/4"	1.1/4"	29	38	83	77	65	371	9 72
1.1/2"	1.1/2"	25	44	84	78	72	558	6 60
2"	2"	43	56	102	95	83	772	1 30

Art.288

Scarico cromato con portagomma

Chromium plated discharge with hose connector

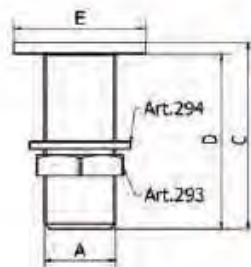


Misura	A	F	E	C	D	B	gr.	Inner box
3/8"	3/8"	23	15	57	52	36	80	15 15
1/2"	1/2"	26	19	63	58	40	107	12 12
3/4"	3/4"	25	24	72	67	47	199	18 18
1"	1"	30	30	76	70	56	296	12 12
1.1/4"	1.1/4"	29	38	83	77	65	371	9 72
1.1/2"	1.1/2"	25	44	84	78	72	558	6 60
2"	2"	43	56	102	95	83	772	1 30

Art.291

Scarico a pozzetto

Discharge - rammer

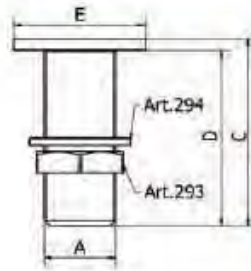


Misura	A	E	C	D	gr.	Inner box
3/8"	3/8"	36	57	52	85	35 350
1/2"	1/2"	40	63	58	120	12 12
3/4"	3/4"	47	72	67	202	18 144
1"	1"	56	76	70	290	12 96
1.1/4"	1.1/4"	65	83	77	391	9 72
1.1/2"	1.1/2"	72	84	78	532	6 60
2"	2"	83	102	95	831	1 30

Art.292

Scarico a pozzetto cromato

Chromium plated discharge - rammer

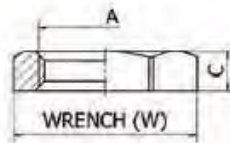


Misura	A	E	C	D	gr.	Inner	box
3/8"	3/8"	36	57	52	85	35	350
1/2"	1/2"	40	63	58	120	12	12
3/4"	3/4"	47	72	67	202	18	144
1"	1"	56	76	70	290	12	96
1.1/4"	1.1/4"	65	83	77	391	12	72
1.1/2"	1.1/2"	72	84	78	532	6	60
2"	2"	83	102	95	831	1	30

Art.293

Controdado pesante

Heavy lock nut

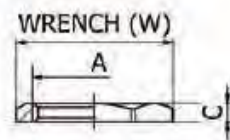


Misura	A	W	C	gr.	Inner	box
1/4"	1/4"	17	5	5	50	50
3/8"	3/8"	22	6	11	50	50
1/2"	1/2"	24	8	11	50	50
3/4"	3/4"	32	8	23	25	25
1"	1"	40	8,5	40	20	20
1.1/4"	1.1/4"	48	8,5	49	10	10
1.1/2"	1.1/2"	58	8,5	86	10	10
2"	2"	70	11	128	5	5

Art.293/R

Controdado standard

Standard lock nut

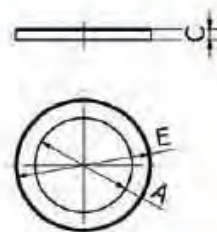


Misura	A	W	C	gr.	Inner	box
3/4"	3/4"	31	6	15	50	50
1"	1"	37	5	25	40	40

Art.294

Rondella

Washer

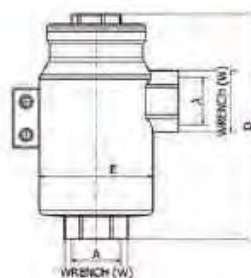


Misura	A	E	C	gr.	Inner	box
3/8"	18	24	3	5	50	50
1/2"	22	32	3	10	50	50
3/4"	37	37	3	15	25	25
1"	34	46	3	19	20	20
1.1/4"	44	55	4	29	10	10
1.1/2"	46	65	4	46	10	10
2"	61	75	3,5	43	5	5

Art.523

Filtro depurazione acqua con rete Inox

Filter for water with Stainless Steel wiremesh



Misura	A	W	D	E	gr.	Inner	box
3/8"	3/8"	10	135	66	983	1	1
1/2"	1/2"	12	135	66	971	1	1
3/4"	3/4"	14	135	66	886	1	1

Rete inox ESTRAIBILE

Wiremesh filter interchangeable

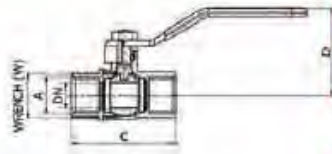
VALVOLE A SFERA

- VALVOLE A PASSAGGIO TOTALE - PN40 - GUARNIZIONI DI TENUTA IN P.T.F.E.
- DISPONIBILI A RICHIESTA VALVOLE CON PN50 SERIE EXTRA PESANTE

Art.417

Valvola a sfera F.F., MANIGLIA INOX

Fullway ball valve F.F., STAINLESS STEEL HANDLE



Misura / A	DN	W	C	D	gr.	Inner	box
1/2"	15	25	58	50	188	12	120
3/4"	20	31	64	54	309	12	96
1"	25	38	70	61	426	6	60
1.1/4"	32	47	82	74	658	4	40
1.1/2"	40	54	94	80	910	4	20
2"	50	66	109	89	1477	2	16

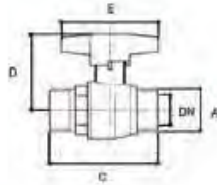
Maniglia in acciaio Inox 304
con rivestimento in gomma blu

Stainless steel 304 handle
with blue rubber covering

Art.425

Valvola a sfera M./M. con farfalla

Ball valve M./M. with wing handle

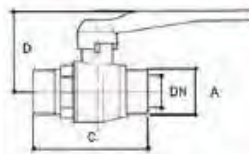


Misura	A	DN	PN	C	D	gr.	Inner	box
1/4"	1/4"	10	30			10	10	
3/8"	3/8"	10	30			10	10	
1/2"	1/2"	14	30	63	45	192	10	10
3/4"	3/4"	19	30	69	47	259	10	10
1"	1"	25	30	80	58	418	6	6

Art.426

Valvola a sfera M./M. con maniglia

Ball valve M./M. with handle

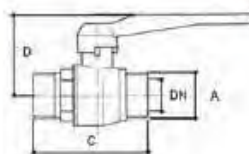


Misura	A	DN	PN	C	D	gr.	Inner	box
1/4"	1/4"	10	30			10	10	
3/8"	3/8"	10	30			10	10	
1/2"	1/2"	14	20	63	45	174	12	120
3/4"	3/4"	19	20	69	47	264	10	10
1"	1"	25	20	80	58	429	6	6
1.1/4"	1.1/4"	31	16	93	65	668	5	5
1.1/2"	1.1/2"	39	16	103	80	910	5	5

Art.426/N

Valvola a sfera M./M. con maniglia

Ball valve M./M. with handle



Misura	A	DN	PN	C	D	gr.	Inner	box
1/2"	1/2"	14	20	63	45	154	12	120

Maniglia in Alluminio nera

Black Aluminium handle

Art.416/E Valvola a sfera F.F. con asta prolungata

Fullway ball valve F.F. with extension



Misura / A	Inner box	
1/2"	6	60
3/4"	8	64
1"	4	40
1.1/4"	4	24
1.1/2"	4	24
2"	2	12

Art.1700 Valvola F.F. con ritegno incorporato

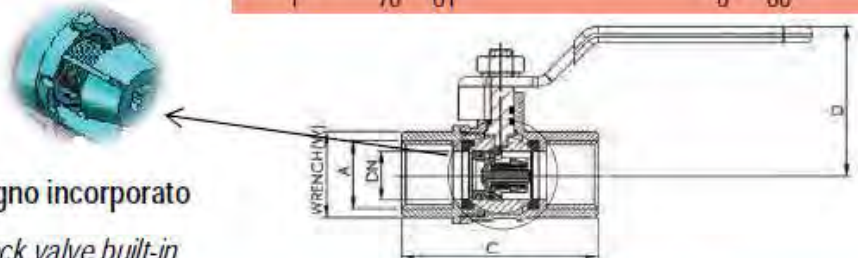
Fullway ball valve F.F. with check valve built-in



M.F. disp. su richiesta
on request available M.F.

Misura / A	C	D	Inner box	
1/2"	58	50	12	120
3/4"	64	54	12	96
1"	70	61	6	60

Ritegno incorporato
Check valve built-in



Art.1705 Valvola F.F. con ritegno incorporato

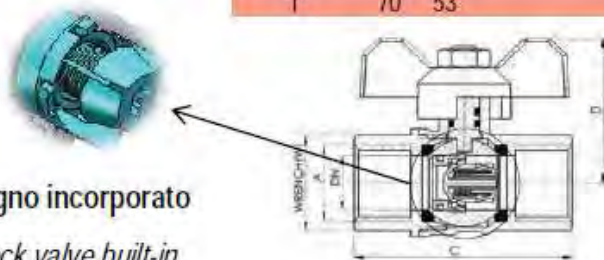
Fullway ball valve F.F. with check valve built-in



M.F. disp. su richiesta
on request available M.F.

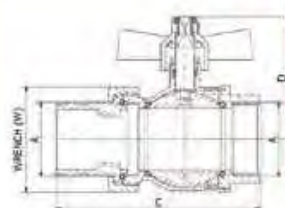
Misura / A	C	D	Inner box	
1/2"	58	38	12	120
3/4"	64	46	12	96
1"	70	53	6	60

Ritegno incorporato
Check valve built-in



Art.365 Valvola a sfera F.M. con bocchettone

Ball valve F.M. with pipe union

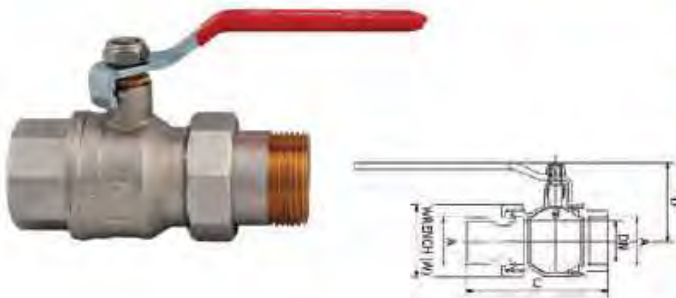


Misura / A	DN	PN	W	C	D	gr.	Inner box	
1/2"	14	30	25	73	43	200	10	120
3/4"	19	30	31	80	46	307	10	100
1"	24	30	38	91	54	469	6	48
1.1/4"	32	25	47	106	66	670	4	36
1.1/2"	40	25	54	127	79	1195	2	16

Art.370

Valvola a sfera F.M. con bocchettone

Ball valve F.M. with pipe union

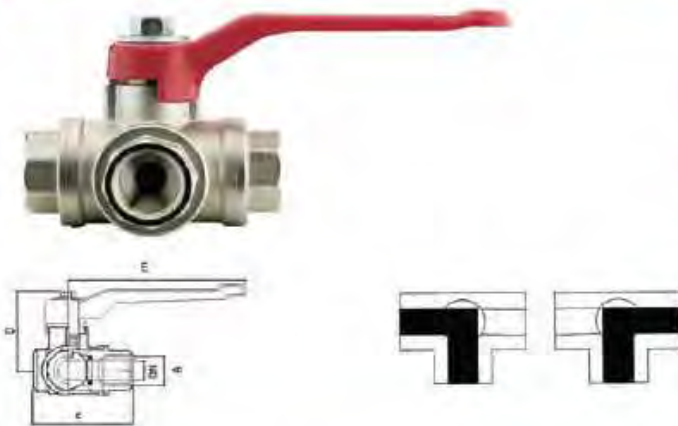


Misura / A	DN	PN	W	C	D	gr.	Inner	box
1/2"	14	30	25	73	43	200	10	120
3/4"	19	30	31	80	46	307	10	100
1"	24	30	38	91	54	469	6	48
1.1/4"	32	25	47	106	66	670	4	36
1.1/2"	40	25	54	127	79	1195	2	20
2"	50	20	66	146	91	1823	2	16
2.1/2"							1	1
3"							1	1
4"							1	1

Art.407

Valvola a sfera F.F.F. a 3 vie a "L" PN 40

3 ways ball valve F.F.F. "L" port PN 40

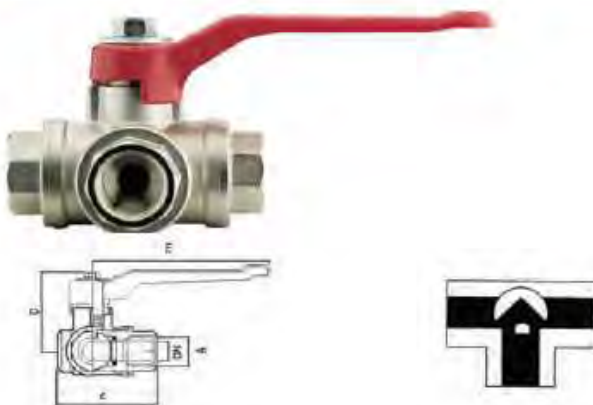


Misura / A	DN	PN	E	C	D	gr.	Inner	box
1/4"	10	40	115	63	52	681	5	5
3/8"	10	40	115	63	52	639	5	5
1/2"	10	40	115	65	52	659	5	5
3/4"	15	40	115	74	56	863	5	5
1"	20	40	150	86	64	1468	4	4
1.1/4"	25	40	150	96	68	4000	3	3
1.1/2"	32	40	240	115	94	3742	3	3
2"	40	40	240	130	104	5680	2	2
2.1/2"	50	40	240	154	124	9500	1	1

Art.408

Valvola a sfera F.F.F. a 3 vie a "T" PN 40

3 ways ball valve F.F.F. "T" port PN 40

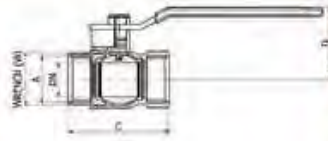


Misura / A	DN	PN	E	C	D	gr.	Inner	box
1/4"	10	40	115	63	52	658	5	5
3/8"	10	40	115	63	52	631	5	5
1/2"	10	40	115	65	52	647	5	5
3/4"	15	40	115	74	56	852	5	5
1"	20	40	150	86	64	1452	4	4
1.1/4"	25	40	150	96	68	2021	3	3
1.1/2"	32	40	240	115	94	3681	3	3
2"	40	40	240	130	104	5560	2	2
2.1/2"	50	40	240	154	124	9500	1	1

Art.414

Valvola a sfera F.F.

Fullway ball valve F.F.



Misura / A	DN	W	C	D	gr.	inner	box
1/2"	14	26	53	43	177	12	144
3/4"	19	31	56	52	232	12	120
1"	24	38	68	61	380	6	72
1.1/4"	30	47	76	73	570	4	40
1.1/2"	37	54	89	77	805	4	24
2"	48	66	101	93	1350	2	16

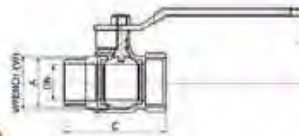
Maniglia in acciaio cromato
con rivestimento in gomma rossa

With handle in chromium plated steel
red rubber covered

Art.428

Valvola a sfera M.F.

Fullway ball valve M.F.



Misura / A	DN	W	C	D	gr.	inner	box
1/2"	14	21	61	43	181	12	120
3/4"	19	28	64	52	240	12	120
1"	24	34	76	61	392	6	60
1.1/4"	30	43	82	73	590	4	40
1.1/2"	37	49	95	77	780	4	24
2"	48	62	110	93	1410	2	16

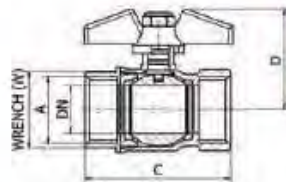
Maniglia in acciaio cromato
con rivestimento in gomma rossa

With handle in chromium plated steel
red rubber covered

Art.427

Valvola a sfera F.F.

Fullway ball valve F.F.



Misura / A	DN	W	C	D	gr.	inner	box
1/2"	14	26	53	38	140	10	120
3/4"	19	31	56	45	202	10	120
1"	24	38	68	46	353	6	72
1.1/4"	30	47	76	73	540	4	4

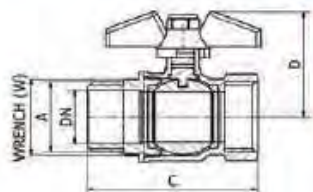
Con farfalla rossa

With red "T" handle

Art.429

Valvola a sfera M.F.

Fullway ball valve M.F.



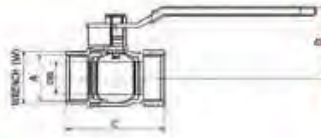
Misura / A	DN	W	C	D	gr.	inner	box
1/2"	14	21	61	38	148	10	144
3/4"	19	28	64	45	213	10	120
1"	24	34	76	46	352	6	60

Con farfalla rossa

With red "T" handle

Art.414/N Valvola a sfera F.F.

Fullway ball valve F.F.



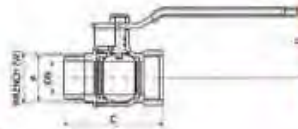
Misura / A	DN	W	C	D	gr.	Inner	box
1/2"	14	26	53	43	155	12	144
3/4"	19	31	56	52	219	12	120
1"	24	38	68	61	370	6	72
1.1/4"	30	47	76	73	526	4	40
1.1/2"	37	54	89	77	738	4	24
2"	48	66	101	93	1265	2	16

Con maniglia in Alluminio nera

With Aluminium black handle

Art.428/N Valvola a sfera M.F.

Fullway ball valve M.F.



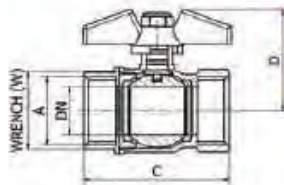
Misura / A	DN	W	C	D	gr.	Inner	box
1/2"	14	21	61	43	166	12	144
3/4"	19	28	64	52	229	12	120
1"	24	34	76	61	380	6	60
1.1/4"	30	43	82	73	548	4	40
1.1/2"	37	49	95	77	736	4	24
2"	48	62	110	93	1310	2	16

Con maniglia in Alluminio nera

With Aluminium black handle

Art.427/N Valvola a sfera F.F.

Fullway ball valve F.F.



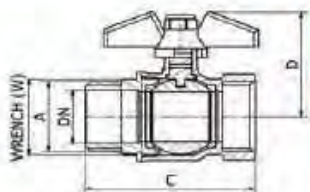
Misura / A	DN	W	C	D	gr.	Inner	box
1/2"	14	26	53	38	140	10	120
3/4"	19	31	56	45	202	10	120
1"	24	38	68	46	353	6	60
1.1/4"	30	47	76	73	570	4	4

Con farfalla nera

With black "T" handle

Art.429/N Valvola a sfera M.F.

Fullway ball valve M.F.



Misura / A	DN	W	C	D	gr.	Inner	box
1/2"	14	21	58	38	148	10	120
3/4"	19	28	60	45	213	10	120
1"	24	34	77	46	352	6	60

Con farfalla nera

With black "T" handle

FLESSIBILI RACCORDATI IN INOX

ART. 2562

Flessibile inox MF.
MF stainless steel flexible pipe.

codice code	cm 25	conf. pack
0240601	1/2"x1/2"	25
0240602	1/2"x3/8"	25
0240603	3/8"x3/8"	25
0240604	3/8"x1/2"	25
cm 30		
0240611	1/2"x1/2"	25
0240612	1/2"x3/8"	25
0240613	3/8"x3/8"	25
0240614	3/8"x1/2"	25
cm 35		
0240621	1/2"x1/2"	25
0240622	1/2"x3/8"	25
0240623	3/8"x3/8"	25
0240624	3/8"x1/2"	25
cm 40		
0240631	1/2"x1/2"	25
0240632	1/2"x3/8"	25
0240633	3/8"x3/8"	25
0240634	3/8"x1/2"	25
cm 50		
0240641	1/2"x1/2"	25
0240642	1/2"x3/8"	25
0240643	3/8"x3/8"	25
0240644	3/8"x1/2"	25



ART. 2568

Flessibile inox MF c/ nipples lungo.
Long stainless steel flexible pipe with nipples.

codice code	cm 25	conf. pack
0240801	1/2"x1/2"	25
0240802	1/2"x3/8"	25
0240803	3/8"x3/8"	25
0240804	3/8"x1/2"	25
cm 30		
0240811	1/2"x1/2"	25
0240812	1/2"x3/8"	25
0240813	3/8"x3/8"	25
0240814	3/8"x1/2"	25
cm 35		
0240821	1/2"x1/2"	25
0240822	1/2"x3/8"	25
0240823	3/8"x3/8"	25
0240824	3/8"x1/2"	25
cm 40		
0240831	1/2"x1/2"	25
0240832	1/2"x3/8"	25
0240833	3/8"x3/8"	25
0240834	3/8"x1/2"	25
cm 50		
0240841	1/2"x1/2"	25
0240842	1/2"x3/8"	25
0240843	3/8"x3/8"	25
0240844	3/8"x1/2"	25



ART. 2564

Flessibile inox FF.
FF stainless steel flexible pipe.

codice code	cm 25	conf. pack
0240701	1/2"x1/2"	25
0240708	1/2"x3/8"	25
0240703	3/8"x3/8"	25
cm 30		
0240711	1/2"x1/2"	25
0240712	1/2"x3/8"	25
0240713	3/8"x3/8"	25
cm 35		
0240721	1/2"x1/2"	25
0240722	1/2"x3/8"	25
0240723	3/8"x3/8"	25
cm 40		
0240731	1/2"x1/2"	25
0240732	1/2"x3/8"	25
0240733	3/8"x3/8"	25
cm 50		
0240741	1/2"x1/2"	25
0240742	1/2"x3/8"	25
0240743	3/8"x3/8"	25



ART. 2570

Flessibile inox MF 1/2"x1/2" gigante per scaldabagno.
Water heater very large MF 1/2"x1/2" stainless steel flexible pipe.

codice code	cm	conf. pack
0241025	25	25
0241030	30	25
0241035	35	25
0241040	40	25
0241050	50	25



ART. 2572

Flessibile acciaio zincato antivibranti MF per acqua fredda e calda sino a 80° sede piana.
Flat seat MF vibration-damping flexible pipes for cold and hot water up to 80°.

codice code	cm 30	conf. pack
0240208	1/2"	10
0240209	3/4"	10
0240210	1"	10
0240211	1"1/4	5
0240212	1"1/2	5
0240213	2"	5
cm 40		
0240218	1/2"	10
0240219	3/4"	10
0240220	1"	10
0240221	1"1/4	5
0240222	1"1/2	5
0240223	2"	5
cm 50		
0240248	1/2"	10
0240249	3/4"	10
0240250	1"	10
0240251	1"1/4	5
0240252	1"1/2	5
0240253	2"	5
cm 60		
0240268	1/2"	10
0240269	3/4"	10
0240270	1"	10
0240271	1"1/4	5
0240272	1"1/2	5
0240273	2"	5



ART. 2566

Flessibile 1" MF con curvetta per elettropompe.
MF stainless steel flexible pipe with elbow for pump.

codice code	cm	conf. pack
0240405	50	10
0240410	100	10



CHIMICO PER IDROTEKNICA



ART. 2804

LOCTITE 55 il filo sigillaraccordi. Sigillante multifibra in nylon per filettature sia in plastica che metallo.

codice code	mt	conf. pack
1064020	150	48
1064022	50 Blister	24



ART. 2806

Tangit UNI-LOCK filo sigillante pericoperto pronto all'uso.

Tangit UNI-LOCK sealing products ready to be used.

codice code	mt	conf. pack
1064011	80	20
1064014	160	20



ART. 2808

TANGIT, adesivo a solvente per PVC rigido, in tubetti.

TANGIT solvent glue used for rigid PVC materials which is contained in small tubes.

codice code	gr	conf. pack
1064002	125	12



ART. 2810

TANGIT, adesivo a solvente per PVC rigido, in barattoli.

TANGIT solvent glue used for rigid PVC materials which is contained in cans.

codice code	gr	conf. pack
1064004	250 c/pennello	24
1064006	500	12
1064007	1000	12



ART. 2812

TANGIT REINIGER detergente in barattolo.

TANGIT REINIGER it is necessary to integrate it with canned TANGIT glue.

codice code	ml	conf. pack	€ cad. € each
1064010	1.000	12	25,00



ART. 2814

TANGIT detergente speciale KS It. 1. TANGIT KS It. 1.

codice code	conf. pack
1064012	8



ART. 2616

TANGIT ORANGIT in tubetto: adesivo a solvente per pvc rigido di colore arancione.

TANGIT ORANGIT solvent glue used for rigid PVC materials orange colours.

codice code	gr	conf. pack
1064018	125	50



ART. 2818

GRIFFON adesivo in gel per l'incollaggio di tubi e raccordi in PVC-U idoneo per Ø fino a 250 mm max 16 bar.

GRIFFON gel glue for PVC pipe and fitting to be used until Ø 250 mm and max 16 bar.

codice code	in tubetto ml	conf. pack
1064102	125	30



ART. 2820

GRIFFON adesivo in gel per l'incollaggio di tubi e raccordi in PVC-U idoneo per Ø fino a 250 mm max 16 bar. In flacone con speciale applicatore

GRIFFON gel glue for PVC pipe and fitting to be used until Ø 250 mm and max 16 bar.

codice code	in flacone ml	conf. pack
1064104	250	24
1064106	500	12
1064107	1000	8



ART. 2822

GRIFFON detergente in lattina ml 1000 per le pulizie, lo sgrassaggio e la preparazione delle superfici di tubi, manicotto e raccordi in PVC e ABS.

GRIFFON to clean and prepare the surface of pipes and fitting in PVC and ABS.

codice code	in lattina ml	conf. pack
1064110	1000	6



ART. 2824

SALDAKIT, adesivo universale atossico. Sigilla e ripara vari tipi di metalli anche sott'acqua.

SALDAKIT, non-toxic universal glue. Perfectly seals and repairs any metals type, also underwater.

codice code	gr	conf. pack
7020580	70	10



ART. 2826

Silicon per giunti a vite in barattoli.
Canned Silicon product used for screw couplings.

codice code	gr	conf. pack
0121200	460	48



ART. 2828

Silic per giunti a vite in barattoli.
Canned Silic product used for screw couplings.

codice code	gr	conf. pack
0121201	460	60



ART. 2830

Pasta verde per giunti a vite in barattoli da gr. 450.
Sealing compound for threaded joints and fittings in can of 450 gr.

codice code	gr	conf. pack
0121100	450	48



ART. 2832

Pasta verde per giunti a vite in tubetto da gr 100.
Sealing compound for threaded joints and fittings in tube of mets.

codice code	gr	conf. pack
0121175	100	12



ART. 2834

Ermetic Pasta verde per giunti a vite in barattoli da gr. 460.
Ermetic Green compound used for screw couplings which is contained in gr. 460 cans.

codice code	gr	conf. pack
0121105	460	60



ART. 2836

Pasta extra gas priva di sostanze nocive per gas-acqua.
Gas and water extra gas compound without noxious substances.

codice code	gr	conf. pack
0121101	460	60



ART. 2838

Pasta Kolmat per acqua e gas priva di sostanze nocive in barattoli.
Canned gas and water Kolmat compound without noxious substances.

codice code	gr	conf. pack
0121300	450	15



ART. 2840

Pasta Kolden per gas acqua in barattoli da ml. 400.
Gas and water Kolden compound which is contained in ml. 400 cans.

codice code	ml	conf. pack
0121350	400	30



ART. 2842

Stucco caldaia in barattoli.
Canned boiler plaster.

codice code	gr	conf. pack
0121400	900	27



ART. 2844

Stucco per sanitari in barattoli.
Canned sanitary facility plaster.

codice code	gr	conf. pack
0121510	900	24



ART. 2846

Sigillante per sanitari in strisce da cm 50 su 4 file = 2mt.
White Elastic mastic is available in small bars.

codice code	gr	conf. pack
0121715	400	30

Idem grigio in rotoli da mt 25 su 5 file = 125mt.

White Elastic mastic is available in small bars.

codice code	mt	conf. pack
0121716	25	2



ART. 2848

Scioglo in polvere per sgrassare e pulire.
Scioglo powder used to degrease and clean sanitary facilities.

codice code	gr	conf. pack
0121705	600	36



ART. 2850

Silicone acetico antimuffa in cartucce da ml. 280 SIL 3004.
Anti-mould silicone is contained in ml. 280 cartridges SIL 3004.

codice code		conf. pack
0121902	Trasparente	30
0121901	Bianco White	30



ART. 2852

Silicone acetico antimuffa professionale in cartucce da ml. 280.
Professional anti-mould silicone is contained in ml. 280 cartridges.

codice code		conf. pack
0121915	Trasparente	30
0121916	Bianco/White	30



ART. 2854

Silicone marrone in cartucce da ml. 280.
Coloured silicone is contained in ml. 280 cartridges.

codice code	colore colour	conf. pack
0121922	marrone	30



ART. 2856

Silicone rosso per alte temperature in cartucce da ml. 310.
Red silicone for high temperature is contained in ml. 310 cartridges.

codice code	colore colour	conf. pack
0121920	rosso	15



ART. 2858

Silicone in tubetto ml. 60.
Silicone in tube ml. 60.

codice code		conf. pack
0121941	trasparente	24
0121942	bianco	24



ART. 2860

Tassello chimico Forte Presa.
Chemical anchors strong grip.

codice code	ml.	conf. pack
0121965	300	15



ART. 2862

Pistola per silicone modello a frizione inglese.
English clutch silicone gun.

codice code	conf. pack
0122001	10



ART. 2864

Pistola per silicone modello a stelo originale inglese semiprofessionale.
Semi-professionale English original shaft silicone gun.

codice code	conf. pack
0122000	10



ART. 2866

Pistola per silicone modello a tuba in alluminio professionale.
Professional aluminium tube silicone gun.

codice code	conf. pack
0122002	2



ART. 2868

CERCAFUGHE Rivelatore di fughe gas.
CERCAFUGHE product detects gas leaks.

codice code	ml.	conf. pack
2385001	400	24



ART. 2870

Antigelo Liquido per impianti riscaldamento. Percentuale x lt. 100 d'acqua -5: 10%, -20: 35%, -10: 20%, -30: 35%.

Liquid Anti-Freeze product used for heating systems having the following percentages per 100 water lt.: -5: 10%, -20: 35%, -10: 20%, -30: 35%.

codice code	lattine kg. can content	conf. pack
0900512	Kg. 12	1
0900525	Kg. 25	1



ART. 2872

Schiuma poliuretanic in flaconi.
Polyurethane foam is contained small bottles.

codice code	ml.	conf. pack
0121950	750	12



ART. 2930

Benda autoamalgamante biadesiva da mt. 10.

Bio-adhesive auto-amalgamating tape mt. 10.

codice code	H cm x mt.	conf. pack
0105070	5x10	30
0105080	10x10	15



ART. 2932

Nastro gomma adesivo, anticondensa alto cm. 5 x mt. 10 spessore mm. 3.

cm. 5 x mt. 10 high rubber tape.

codice code	conf. pack
0101501 nero	50



ART. 2934

Nastro isolante anticondensa colore Ice ghiaccio per la finitura degli impianti di condizionamento e riscaldamento Temperatura di impiego da -80 a +100° C.

codice code	cm x mt.	conf. pack
0101770	5x10	24



ART. 2936

Fascia anticondensa per tubazioni calde e fredde -29 +70 °C / Rotoli cm. 5 x mt. 9.

Hot and cold tube anti-condenser water band at -29 +70 °C which is available in cm 5 x mt. 9 rolls.

codice code	spessore thickness	conf. pack	€ cad. € each
0101505	mm. 3	12	16.40



ART. 2938

Cartone esente amianto in fibre minerali come da normative in fogli da mt. 1x1, resistenza termica sino 700°C.

Cardboard without asbestos according to regulations is available in mt. 1x1 sheets.

codice code	conf. fogli
0081504 mm 4	13
0081506 mm 6	9
0081508 mm 8	7
0081510 mm 10	5



ART. 2940

Nastro in fibra di vetro.

codice code	mm	mt.	conf. pack
0081400	60x2	50	2



ART. 2942

Benda bituminosa adatta per la protezione di tubazioni. Temperatura di applicazione: da 5 a +35 °C. Temperatura di esercizio da -20 a +104 °C.

Bituminous band which is used for pipe protection. Application temperature ranges from 5 to +35 °C. Working temperature ranges from -20 to +104°C.

codice code	cm x ml	conf. pack
0105005	5x10	12
0105007	7.5x10	8
0105010	10x10	6



ART. 2944

Nastro adesivo dielettrico nero.

Black dielectric adhesive tape.

codice code	cm x mt.	conf. pack
0101701	5x20	96
0101702	10x20	48
Colore grigio perla.		
0101750	5x25	48



ART. 2946

Benda plastica satinata in rotoli da mt. 25 - alt. cm. 10 - peso gr. 350 ca.

codice code	colore colour	conf. pack
0104001	Bianca White	60
0104002	Rossa/Red	60
0104003	Blu/Blue	60



ART. 2948

DENSOFLEX banda paraffinosa anticorrosiva per la protezione di tubature interrate.

DENSOFLEX anti-corrosive paraffinic band which is used to protect underground pipes.

codice code	cm x mt.	conf. pack
0105000	10x10	18



ART. 2950

Fibra di vetro, rotolo alto cm. 20 x ml. 200.

Cm. 20 x ml. 200 high glass fibre roll.

codice code	rotoli rolls	conf. pack
0120600 kg. 8	8	5



ART. 2952

Nastro adesivo PVC in rotoli 5 cm x 66 mt.

Adhesive tape rolls.

codice code	conf. pack
0901201 Avana/ Havana-brown	72
0901202 Bianca/White	72

Su richiesta si può avere personalizzato Minimo 288 pezzi aumento 40%